

Anti-MYC Antibody (R2X12)

Summary

Catalog No.	RHB90804
Clone ID	R2X12
Host species	Mouse
Tested applications	ELISA: 1:10000, FCM: 1:200-1:400, IHC: 1:200-1:1000
Species reactivity	Human
Form	Liquid
Storage buffer	0.01M PBS, pH 7.4, 0.05% Sodium Azide.
Concentration	1 mg/ml
Purity	>95% as determined by SDS-PAGE.
Clonality	Monoclonal
Isotype	IgG1
Applications	ELISA, FCM, IHC
Target	Proto-oncogene c-Myc, BHLHE39, MYC, Myc proto-oncogene protein, bHLHe39, Transcription factor p64, Class E basic helix-loop-helix protein 39
Purification	Protein A/G purified from cell culture supernatant.
Endotoxin level	Please contact with the lab for this information.
Accession	P01106

Stability and Storage

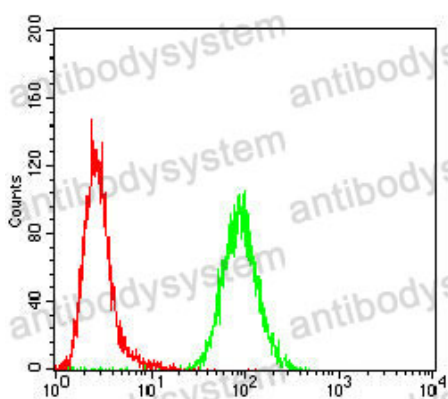
Use a manual defrost freezer and avoid repeated freeze-thaw cycles.

Store at 4°C short term (1-2 weeks). Store at -20°C 12 months. Store at -80°C long term.

Note

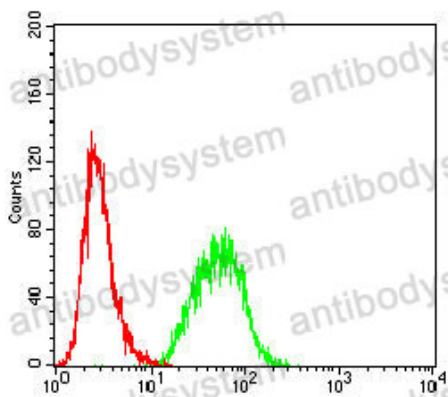
For research use only.

Data Image



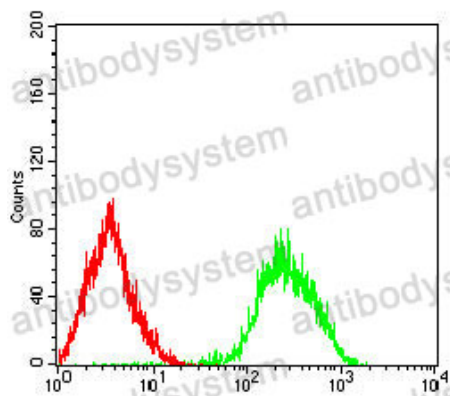
Flow Cytometry

Flow cytometric analysis of HeLa cells using C-MYC mouse mAb (green) and negative control (red).



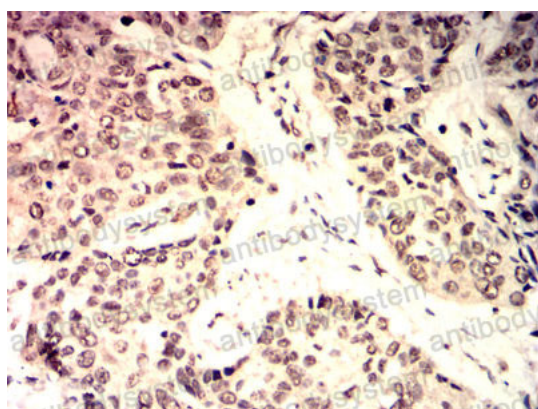
Flow Cytometry

Flow cytometric analysis of Hepg2 cells using C-MYC mouse mAb (green) and negative control (red).



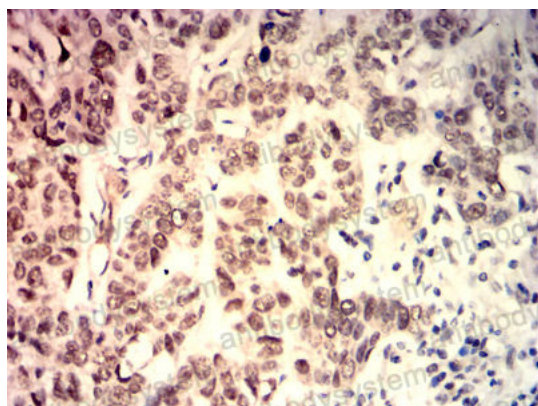
Flow Cytometry

Flow cytometric analysis of Lovo cells using C-MYC mouse mAb (green) and negative control (red).



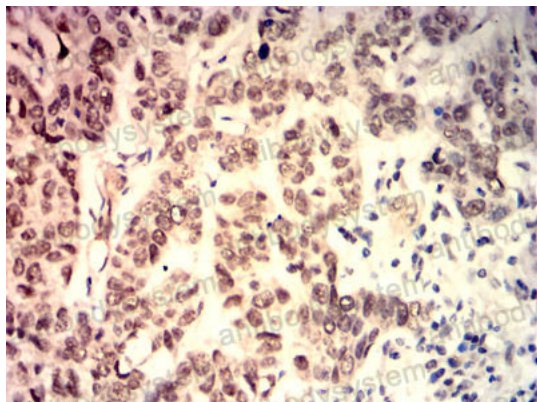
Immunohistochemical

Immunohistochemical analysis of paraffin-embedded human esophageal cancer tissues using C-MYC mouse mAb with DAB staining.



Immunohistochemical

Immunohistochemical analysis of paraffin-embedded human lung cancer tissues using C-MYC mouse mAb with DAB staining.



Immunohistochemical

Immunohistochemical analysis of paraffin-embedded human lung cancer tissues using C-MYC mouse mAb with DAB staining.