

Anti-KNG1 Antibody (R2X08)

Summary

Catalog No.	RHB90602
Clone ID	R2X08
Host species	Mouse
Tested applications	IHC: 1:500, WB: 1:500-1:1000
Species reactivity	Human
Form	Liquid
Storage buffer	0.01M PBS, pH 7.4, 0.05% Sodium Azide.
Concentration	1 mg/ml
Purity	>95% as determined by SDS-PAGE.
Clonality	Monoclonal
Isotype	IgG2b
Applications	IHC, WB
Target	Kininogen-1, Kallidin II, Fitzgerald factor, KNG, Alpha-2-thiol proteinase inhibitor, Kallidin I, Williams-Fitzgerald-Flaujeac factor, High molecular weight kininogen, HMWK, KNG1, Ile-Ser-Bradykinin, BDK
Purification	Protein A/G purified from cell culture supernatant.
Endotoxin level	Please contact with the lab for this information.
Accession	P01042

Stability and Storage

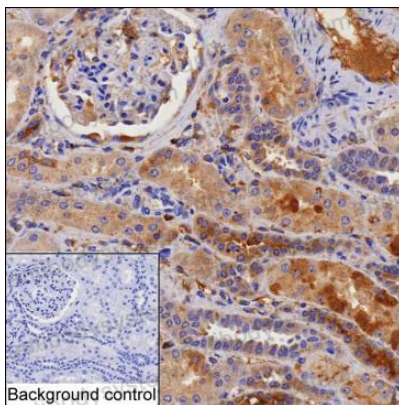
Use a manual defrost freezer and avoid repeated freeze-thaw cycles.

Store at 4°C short term (1-2 weeks). Store at -20°C 12 months. Store at -80°C long term.

Note

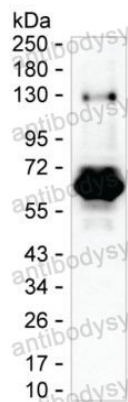
For research use only.

Data Image



Immunohistochemical

IHC-P analysis of kidney tissue by KNG1 antibody (RHB90602). IHC-P was performed using sections of the formalin-fixed paraffin-embedded kidney tissue; Result: Cells in tubules are positively stained at the cytoplasm.



Western blot

Western blot analysis using human KNG1 mouse mAb against human plasma