

Anti-a1AT/Serpin A1/SERPINA1 Antibody (R2W95)

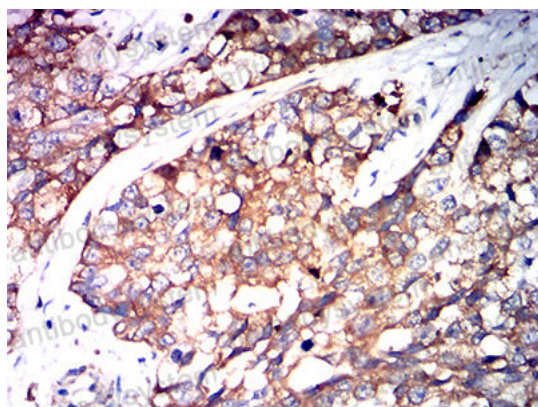
Summary

Catalog No.	RHB89503
Clone ID	R2W95
Host species	Mouse
Tested applications	ELISA: 1:10000, IHC: 1:200-1:1000
Species reactivity	Human
Form	Liquid
Storage buffer	0.01M PBS, pH 7.4, 0.05% Sodium Azide.
Concentration	1 mg/ml
Purity	>95% as determined by SDS-PAGE.
Clonality	Monoclonal
Isotype	IgG1
Applications	ELISA, IHC
Target	AAT, SPAAT, PI, Alpha-1 protease inhibitor, Alpha-1-antitrypsin, Alpha-1-antiproteinase, SERPINA1, Serpin A1
Purification	Protein A/G purified from cell culture supernatant.
Endotoxin level	Please contact with the lab for this information.
Accession	P01009
Stability and Storage	Use a manual defrost freezer and avoid repeated freeze-thaw cycles. Store at 4°C short term (1-2 weeks). Store at -20°C 12 months. Store at -80°C long term.

Note

For research use only.

Data Image



Immunohistochemical

Immunohistochemical analysis of paraffin-embedded human bladder cancer tissues using SERPINA1 mouse mAb with DAB staining.