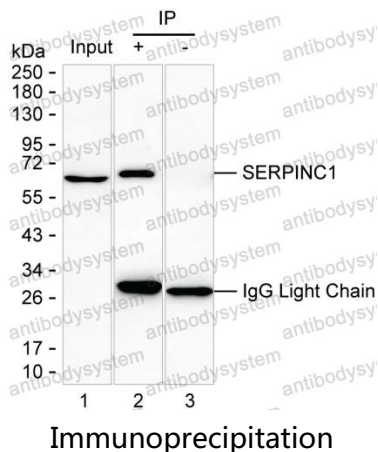


Anti-SERPINC1 Antibody (R2W91)

Summary

Catalog No.	RHB89403
Clone ID	R2W91
Host species	Mouse
Tested applications	IP: 1:100-1:200
Species reactivity	Human
Form	Liquid
Storage buffer	0.01M PBS, pH 7.4, 0.05% Sodium Azide.
Concentration	1 mg/ml
Purity	>95% as determined by SDS-PAGE.
Clonality	Monoclonal
Isotype	IgG1
Applications	IP
Target	Serpin C1, ATIII, AT3, SERPINC1, Antithrombin-III
Purification	Protein A/G purified from cell culture supernatant.
Endotoxin level	Please contact with the lab for this information.
Accession	P01008
Stability and Storage	Use a manual defrost freezer and avoid repeated freeze-thaw cycles. Store at 4°C short term (1-2 weeks). Store at -20°C 12 months. Store at -80°C long term.
Note	For research use only.

Data Image



Lane 1: plasma ; Lane 2: SERPINC1 immunoprecipitated from plasma by RHB89403; Lane 3: The same as Lane 2 but use IgG isotype control antibody ;Result: RHB89403 can immunoprecipitate SERPINC1;