

Anti-CFB/Complement factor B Antibody (R2W86)

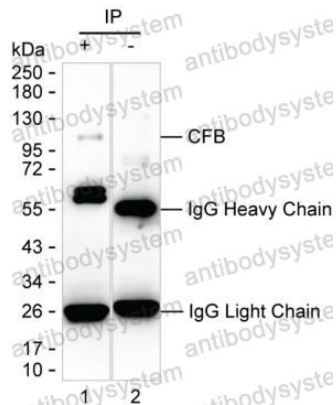
Summary

Catalog No.	RHB88503
Clone ID	R2W86
Host species	Mouse
Tested applications	IP: 1:100-1:200, WB: 1:500-1:1000
Species reactivity	Human
Form	Liquid
Storage buffer	0.01M PBS, pH 7.4, 0.05% Sodium Azide.
Concentration	1 mg/ml
Purity	>95% as determined by SDS-PAGE.
Clonality	Monoclonal
Isotype	IgG2b
Applications	IP, WB
Target	Properdin factor B, Complement factor B, GBG, Glycine-rich beta glycoprotein, BFD, C3/C5 convertase, CFB, PBF2, BF
Purification	Protein A/G purified from cell culture supernatant.
Endotoxin level	Please contact with the lab for this information.
Accession	P00751
Stability and Storage	Use a manual defrost freezer and avoid repeated freeze-thaw cycles. Store at 4°C short term (1-2 weeks). Store at -20°C 12 months. Store at -80°C long term.

Note

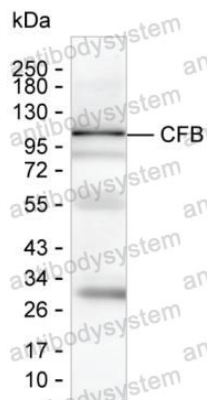
For research use only.

Data Image



Immunoprecipitation

Lane 1: CFB immunoprecipitated from plasma by RHB88503; Lane 2: The same as Lane 2 but use IgG isotype control antibody; Result: RHB88503 can immunoprecipitate CFB.



Western blot

Western blot analysis using human CFB mouse mAb against human plasma