

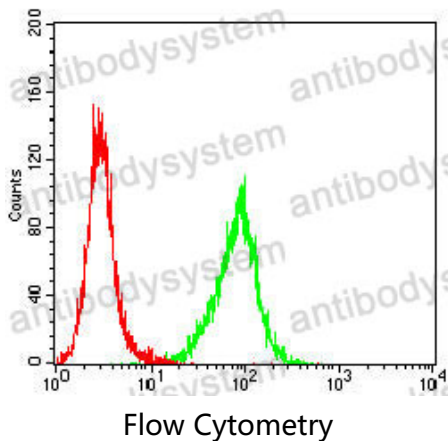
Anti-PLAU Antibody (R2W85)

Summary

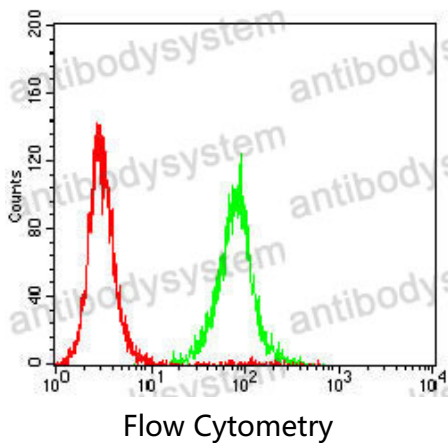
Catalog No.	RHB88304
Clone ID	R2W85
Host species	Mouse
Tested applications	ELISA: 1:10000, FCM: 1:200-1:400
Species reactivity	Human
Form	Liquid
Storage buffer	0.01M PBS, pH 7.4, 0.05% Sodium Azide.
Concentration	1 mg/ml
Purity	>95% as determined by SDS-PAGE.
Clonality	Monoclonal
Isotype	IgG1
Applications	ELISA, FCM
Target	PLAU, uPA, U-plasminogen activator, Urokinase-type plasminogen activator
Purification	Protein A/G purified from cell culture supernatant.
Endotoxin level	Please contact with the lab for this information.
Accession	P00749
Stability and Storage	Use a manual defrost freezer and avoid repeated freeze-thaw cycles. Store at 4°C short term (1-2 weeks). Store at -20°C 12 months. Store at -80°C long term.

Note For research use only.

Data Image



Flow cytometric analysis of HeLa cells using PLAU mouse mAb (green) and negative control (red).



Flow cytometric analysis of HepG2 cells using PLAU mouse mAb (green) and negative control (red).