

Anti-LALBA/alpha Lactalbumin Antibody (R2W82)

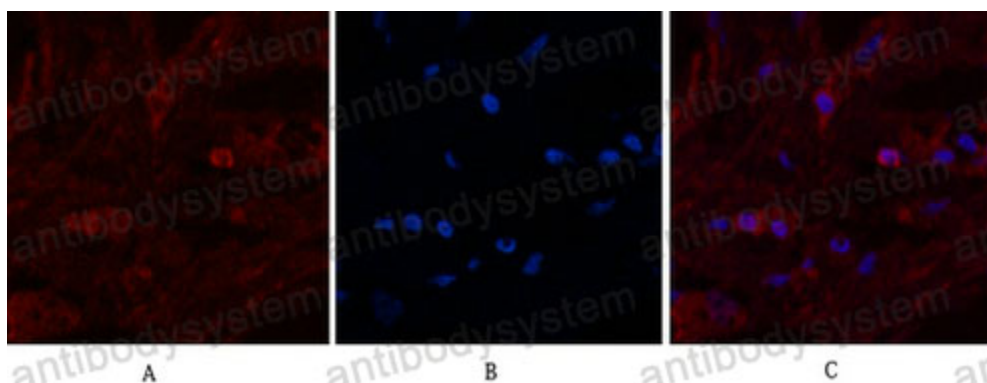
Summary

Catalog No.	RHB87301
Clone ID	R2W82
Host species	Mouse
Tested applications	IF: 1:50-1:200, IHC: 1:50-1:100, WB: 1:500-1:1000
Species reactivity	Human
Form	Liquid
Storage buffer	0.01M PBS, pH 7.4, 0.5% BSA, 0.05% Sodium Azide and 50% Glycerol.
Concentration	1 mg/ml
Purity	>95% as determined by SDS-PAGE.
Clonality	Monoclonal
Isotype	IgG1
Applications	IF, IHC, WB
Target	Lysozyme-like protein 7, Alpha-lactalbumin, Lactose synthase B protein, LALBA, LYZL7
Purification	Protein A/G purified from cell culture supernatant.
Endotoxin level	Please contact with the lab for this information.
Accession	P00709
Stability and Storage	Use a manual defrost freezer and avoid repeated freeze-thaw cycles. Store at 4°C short term (1-2 weeks). Store at -20°C 12 months. Store at -80°C long term.

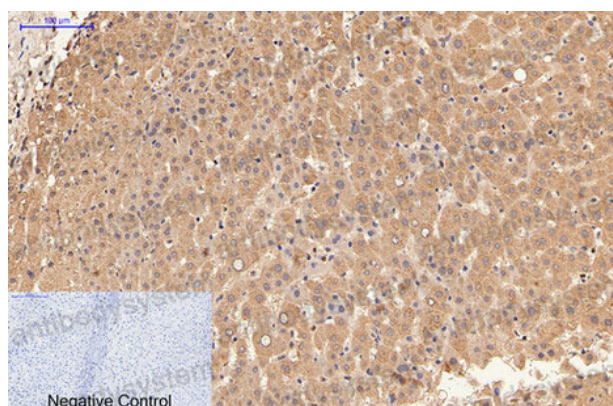
Note

For research use only.

Data Image



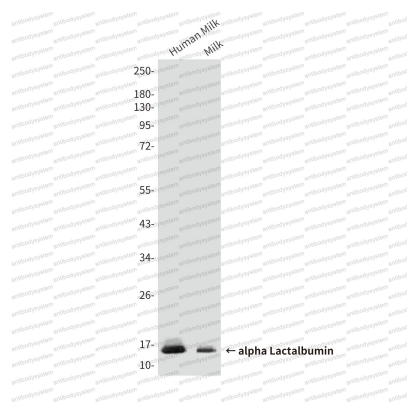
Immunofluorescence



Immunohistochemical

Immunofluorescence analysis of alpha Lactalbumin in Human breast tissue using alpha Lactalbumin antibody (red), and DAPI (blue).

Immunohistochemistry analysis of paraffin-embedded Human liver tissue using alpha Lactalbumin antibody. High-pressure and temperature Sodium Citrate pH 6.0 was used for antigen retrieval. Negative control was used by secondary antibody only.



Western blot

Western blot analysis of alpha Lactalbumin in Human Milk, Milk, lysates using alpha Lactalbumin antibody