

Anti-EGFR/ERBB1/HER1 Antibody (R2W81)

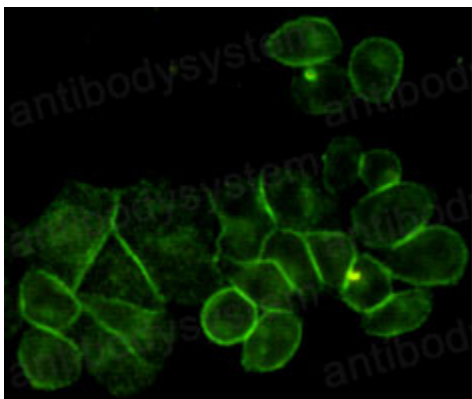
Summary

Catalog No.	RHB86922
Clone ID	R2W81
Host species	Mouse
Tested applications	IF: 1:50-1:200, IP: 1:20, WB: 1:500-1:1000
Species reactivity	Human, Monkey
Form	Liquid
Storage buffer	0.01M PBS, pH 7.4, 0.5% BSA, 0.05% Sodium Azide and 50% Glycerol.
Concentration	1 mg/ml
Purity	>95% as determined by SDS-PAGE.
Clonality	Monoclonal
Isotype	IgG1
Applications	IF, IP, WB
Target	HER1, Receptor tyrosine-protein kinase erbB-1, Proto-oncogene c-ErbB-1, Epidermal growth factor receptor, EGFR, ERBB1, ERBB
Purification	Protein A/G purified from cell culture supernatant.
Endotoxin level	Please contact with the lab for this information.
Accession	P00533
Stability and Storage	Use a manual defrost freezer and avoid repeated freeze-thaw cycles. Store at 4°C short term (1-2 weeks). Store at -20°C 12 months. Store at -80°C long term.

Note

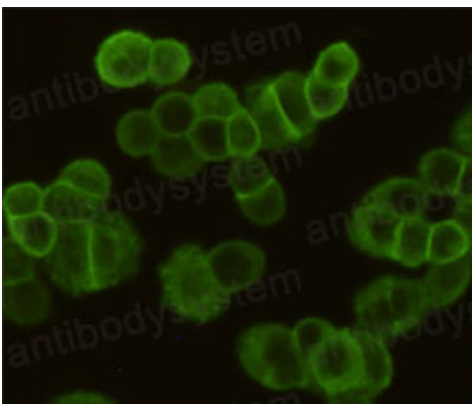
For research use only.

Data Image



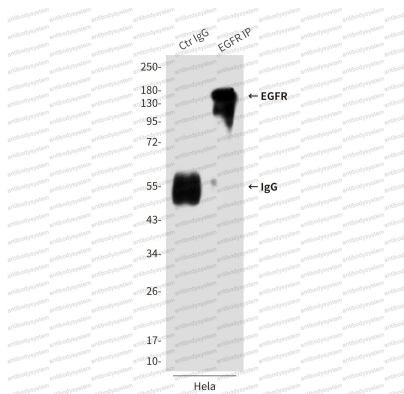
Immunofluorescence

Immunocytochemistry analysis of EGFR in HeLa using EGFR antibody.



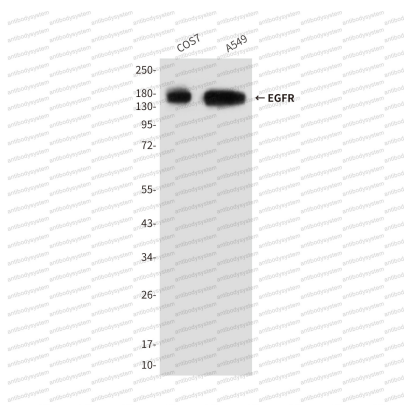
Immunofluorescence

Immunocytochemistry analysis of EGFR in MDA-MB-468 cells using EGFR antibody.



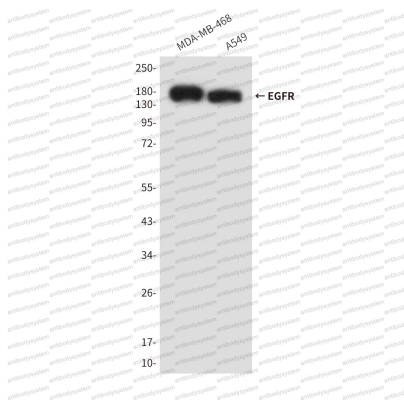
Immunoprecipitation

Immunoprecipitation analysis of EGFR in HeLa lysates using EGFR antibody.



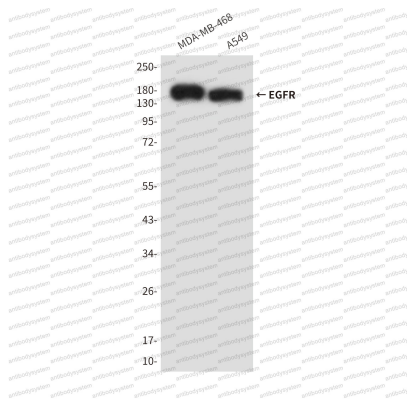
Western blot

Western blot analysis of EGFR in A549 and COS7 lysates using EGFR antibody.



Western blot

Western blot analysis of EGFR in A549 and MDA-MB-468 lysates using EGFR antibody.



Western blot

Western blot analysis of EGFR in A549 and MDA-MB-468 lysates using EGFR antibody.