

Anti-EGFR/ERBB1/HER1 Antibody (R2W78)

Summary

Catalog No.	RHB86919
Clone ID	R2W78
Host species	Mouse
Tested applications	IF: 1:50-1:200, IHC: 1:50-1:100, WB: 1:500-1:1000
Species reactivity	Human
Form	Liquid
Storage buffer	0.01M PBS, pH 7.4, 0.5% BSA, 0.05% Sodium Azide and 50% Glycerol.
Concentration	1 mg/ml
Purity	>95% as determined by SDS-PAGE.
Clonality	Monoclonal
Isotype	IgG1
Applications	IF, IHC, WB
Target	HER1, Receptor tyrosine-protein kinase erbB-1, Proto-oncogene c-ErbB-1, Epidermal growth factor receptor, EGFR, ERBB1, ERBB
Purification	Protein A/G purified from cell culture supernatant.
Endotoxin level	Please contact with the lab for this information.
Accession	P00533
Stability and Storage	Use a manual defrost freezer and avoid repeated freeze-thaw cycles. Store at 4°C short term (1-2 weeks). Store at -20°C 12 months. Store at -80°C long term.

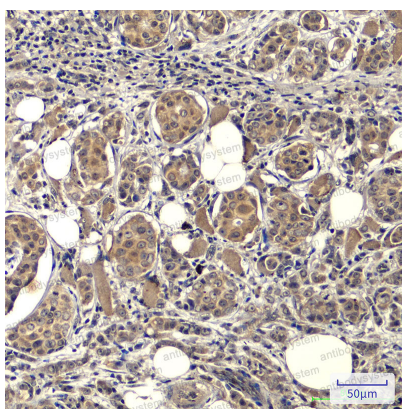
Note

For research use only.

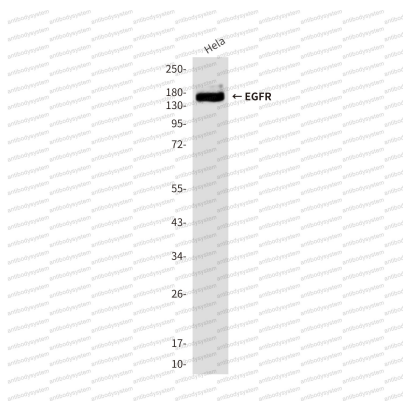
Data Image

**Immunofluorescence**

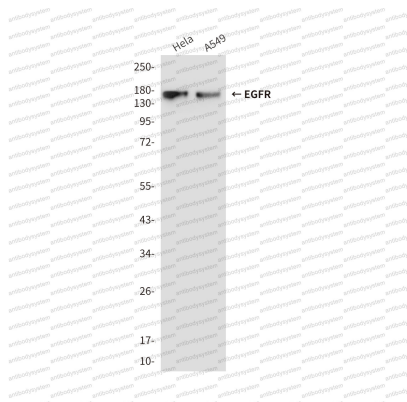
Immunofluorescence analysis of EGFR in Hela using EGFR antibody (Left) and DAPI (Right).

**Immunohistochemical**

Immunohistochemistry analysis of paraffin-embedded Human breast cancer tissue using EGFR antibody High-pressure and temperature Sodium Citrate pH 6.0 was used for antigen retrieval.

**Western blot**

Western blot analysis of EGFR in Hela lysates using EGFR antibody



Western blot

Western blot analysis of EGFR in Hela, A549 lysates using EGFR antibody