

Anti-EGFR/ERBB1/HER1 Antibody (R2W76)

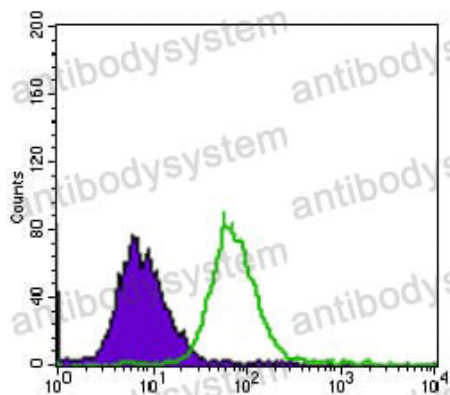
Summary

Catalog No.	RHB86917
Clone ID	R2W76
Host species	Mouse
Tested applications	ELISA: 1:10000, FCM: 1:200-1:400, IHC: 1:200-1:1000, WB: 1:500-1:2000
Species reactivity	Human
Form	Liquid
Storage buffer	0.01M PBS, pH 7.4, 0.05% Sodium Azide.
Concentration	1 mg/ml
Purity	>95% as determined by SDS-PAGE.
Clonality	Monoclonal
Isotype	IgG1
Applications	ELISA, FCM, IHC, WB
Target	HER1, Receptor tyrosine-protein kinase erbB-1, Proto-oncogene c-ErbB-1, Epidermal growth factor receptor, EGFR, ERBB1, ERBB
Purification	Protein A/G purified from cell culture supernatant.
Endotoxin level	Please contact with the lab for this information.
Accession	P00533
Stability and Storage	Use a manual defrost freezer and avoid repeated freeze-thaw cycles. Store at 4°C short term (1-2 weeks). Store at -20°C 12 months. Store at -80°C long term.

Note

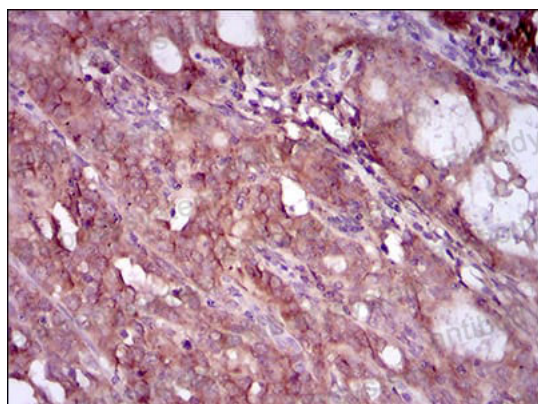
For research use only.

Data Image



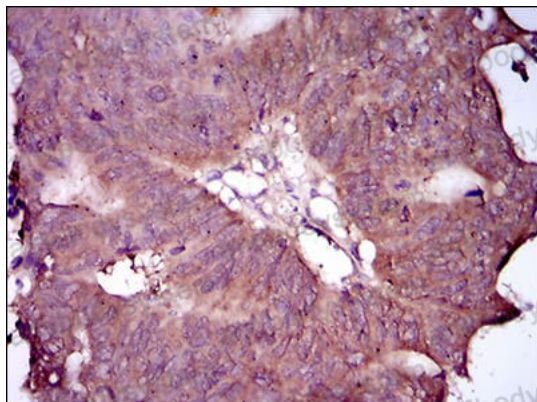
Flow Cytometry

Flow cytometric analysis of HepG2 cells using EGFR mutant mouse mAb (green) and negative control (purple).



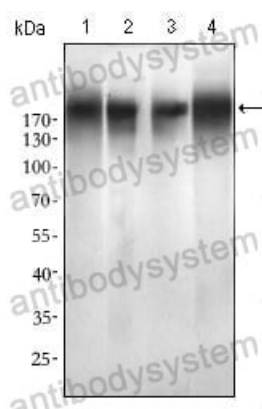
Immunohistochemical

Immunohistochemical analysis of paraffin-embedded human cervical cancer tissues using EGFR mutant mouse mAb with DAB staining.



Immunohistochemical

Immunohistochemical analysis of paraffin-embedded human rectum cancer tissues using EGFR mutant mouse mAb with DAB staining.



Western blot

Western blot analysis using EGFR mutant mouse mAb against SPC-A-1 (1), A549 (2), HepG2 (3) and MCF-7 (4) cell lysate.