

Anti-ALDH1A1 Antibody (R2W67)

Summary

Catalog No.	RHB85104
Clone ID	R2W67
Host species	Mouse
Tested applications	ELISA: 1:10000, IHC: 1:200-1:1000, WB: 1:500-1:2000
Species reactivity	Human
Form	Liquid
Storage buffer	0.01M PBS, pH 7.4, 0.05% Sodium Azide.
Concentration	1 mg/ml
Purity	>95% as determined by SDS-PAGE.
Clonality	Monoclonal
Isotype	IgG1
Applications	ELISA, IHC, WB
Target	Aldehyde dehydrogenase, cytosolic, Retinal dehydrogenase 1, ALDH-E1, RALDH1, Aldehyde dehydrogenase family 1 member A1, ALDH1A1, ALDH1, RALDH 1, ALDC, ALHDII, PUMB1
Purification	Protein A/G purified from cell culture supernatant.
Endotoxin level	Please contact with the lab for this information.
Accession	P00352

Stability and Storage

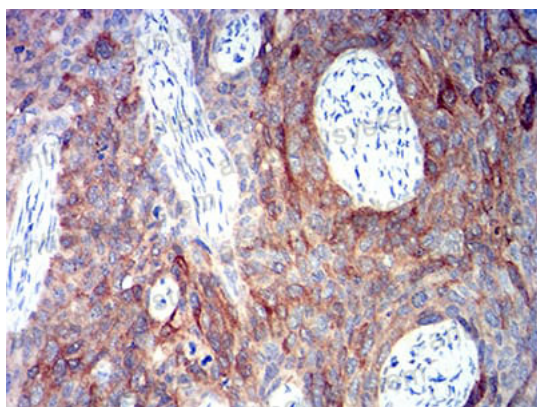
Use a manual defrost freezer and avoid repeated freeze-thaw cycles.

Store at 4°C short term (1-2 weeks). Store at -20°C 12 months. Store at -80°C long term.

Note

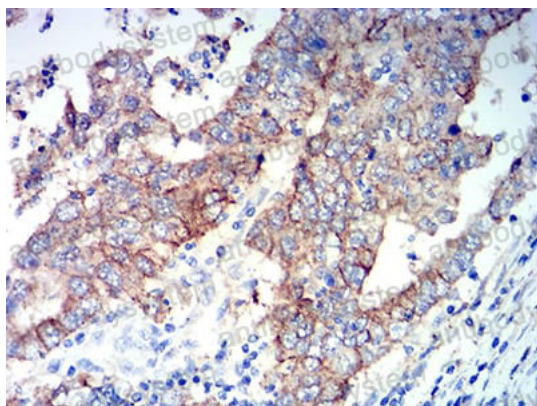
For research use only.

Data Image



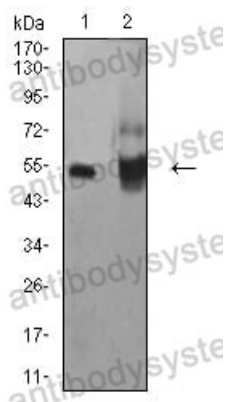
Immunohistochemical

Immunohistochemical analysis of paraffin-embedded human cervical cancer tissues using ALDH1A1 mouse mAb with DAB staining.



Immunohistochemical

Immunohistochemical analysis of paraffin-embedded human stomach cancer tissues using ALDH1A1 mouse mAb with DAB staining.



Western blot

Western blot analysis using ALDH1A1 mouse mAb against HepG2 (1) and A549 (2) cell lysate.