

Anti-ALDH1A1 Antibody (R2W66)

Summary

Catalog No.	RHB85102
Clone ID	R2W66
Host species	Mouse
Tested applications	ELISA: 1:10000, FCM: 1:200-1:400, IHC: 1:200-1:1000, WB: 1:500-1:2000
Species reactivity	Human
Form	Liquid
Storage buffer	0.01M PBS, pH 7.4, 0.05% Sodium Azide.
Concentration	1 mg/ml
Purity	>95% as determined by SDS-PAGE.
Clonality	Monoclonal
Isotype	IgG1
Applications	ELISA, FCM, IHC, WB
Target	Aldehyde dehydrogenase, cytosolic, Retinal dehydrogenase 1, ALDH-E1, RalDH1, Aldehyde dehydrogenase family 1 member A1, ALDH1A1, ALDH1, RALDH 1, ALDC, ALHDII, PUMB1
Purification	Protein A/G purified from cell culture supernatant.
Endotoxin level	Please contact with the lab for this information.
Accession	P00352

Stability and Storage

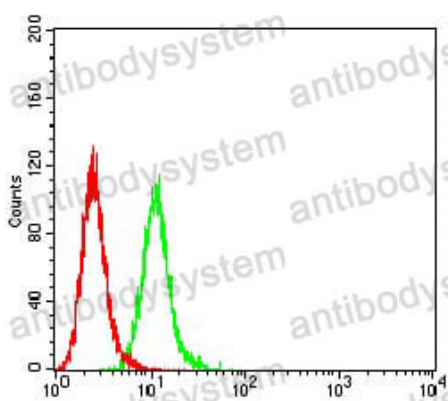
Use a manual defrost freezer and avoid repeated freeze-thaw cycles.

Store at 4°C short term (1-2 weeks). Store at -20°C 12 months. Store at -80°C long term.

Note

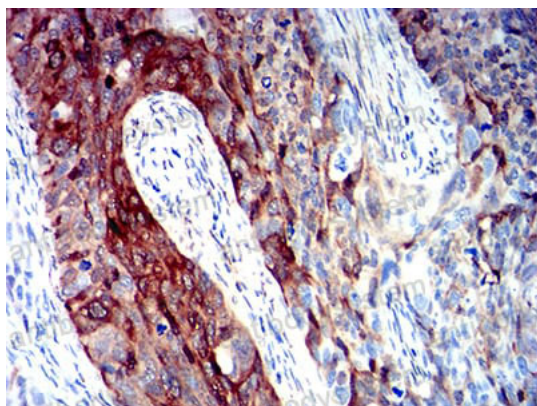
For research use only.

Data Image



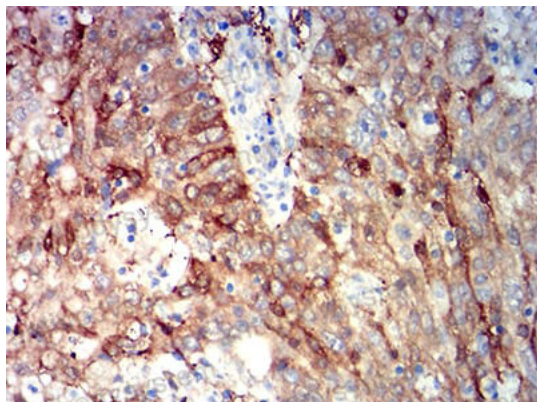
Flow Cytometry

Flow cytometric analysis of HeLa cells using ALDH1A1 mouse mAb (green) and negative control (red).



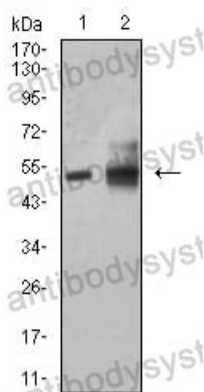
Immunohistochemical

Immunohistochemical analysis of paraffin-embedded human cervical cancer tissues using ALDH1A1 mouse mAb with DAB staining.



Immunohistochemical

Immunohistochemical analysis of paraffin-embedded human stomach cancer tissues using ALDH1A1 mouse mAb with DAB staining.



Western blot

Western blot analysis using ALDH1A1 mouse mAb against HepG2 (1) and A549 (2) cell lysate.