

Anti-CHEK2 Antibody (R2W63)

Summary

Catalog No.	RHB83804
Clone ID	R2W63
Host species	Mouse
Tested applications	IF: 1:200-1:1000, IHC: 1:200-1:1000, WB: 1:500-1:2000
Species reactivity	Human
Form	Liquid
Storage buffer	0.01M PBS, pH 7.4, 0.05% Sodium Azide.
Concentration	1 mg/ml
Purity	>95% as determined by SDS-PAGE.
Clonality	Monoclonal
Isotype	IgG2b
Applications	IF, IHC, WB
Target	RAD53, CHK2 checkpoint homolog, hCds1, Serine/threonine-protein kinase Chk2, CDS1, Checkpoint kinase 2, CHEK2, Hucds1, Cds1 homolog, CHK2
Purification	Protein A/G purified from cell culture supernatant.
Endotoxin level	Please contact with the lab for this information.
Accession	O96017

Stability and Storage

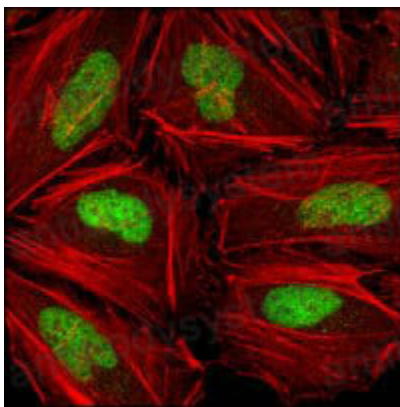
Use a manual defrost freezer and avoid repeated freeze-thaw cycles.

Store at 4°C short term (1-2 weeks). Store at -20°C 12 months. Store at -80°C long term.

Note

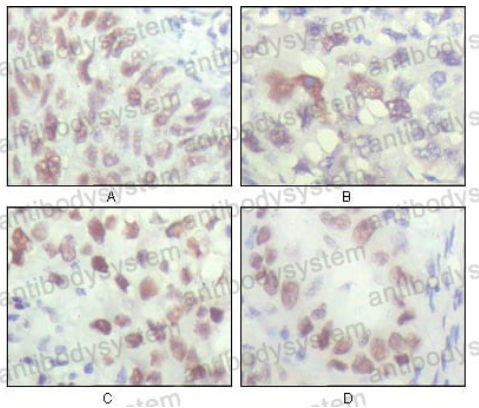
For research use only.

Data Image



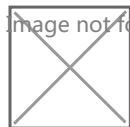
Immunofluorescence

Confocal Immunofluorescence analysis of HeLa cells using CHK2 mouse mAb (green), showing nuclear localization. Red: Actin filaments have been labeled with DY-554 phalloidin.



Immunohistochemical

Immunohistochemical analysis of paraffin-embedded human lung carcinoma (A), liver carcinoma (B), breast carcinoma (C) and kidney carcinoma (D), showing nuclear localization with DAB staining using CHK2 mouse mAb.



Western blot

Western blot analysis using CHK2 mouse mAb against cell lysate from various cell types.