

Anti-BCL10 Antibody (R2W57)

Summary

Catalog No.	RHB82404
Clone ID	R2W57
Host species	Mouse
Tested applications	ELISA: 1:10000, FCM: 1:200-1:400
Species reactivity	Human
Form	Liquid
Storage buffer	0.01M PBS, pH 7.4, 0.05% Sodium Azide.
Concentration	1 mg/ml
Purity	>95% as determined by SDS-PAGE.
Clonality	Monoclonal
Isotype	IgG1
Applications	ELISA, FCM
Target	CED-3/ICH-1 prodomain homologous E10-like regulator, CLAP, B-cell CLL/lymphoma 10, BCL10, CARD-containing molecule enhancing NF-kappa-B, Cellular homolog of vCARMEN, cCARMEN, CIPER, Bcl-10, hCLAP, Cellular-E10, CARD-like apoptotic protein, c-E10, Mammalian CARD-containing adapter molecule E10, B-cell lymphoma/leukemia 10, mE10
Purification	Protein A/G purified from cell culture supernatant.
Endotoxin level	Please contact with the lab for this information.
Accession	O95999

Stability and Storage

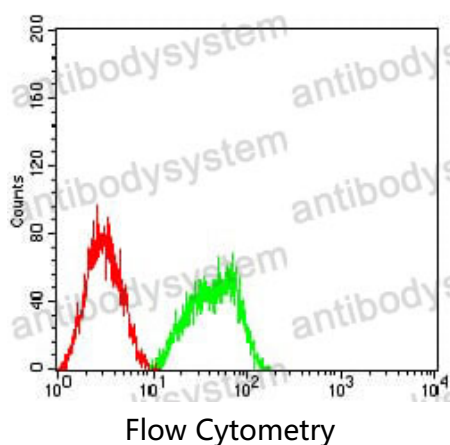
Use a manual defrost freezer and avoid repeated freeze-thaw cycles.

Store at 4°C short term (1-2 weeks). Store at -20°C 12 months. Store at -80°C long term.

Note

For research use only.

Data Image



Flow cytometric analysis of HL-60 cells using BCL10 mouse mAb (green) and negative control (red).