

Anti-BCL10 Antibody (R2W56)

Summary

Catalog No.	RHB82405
Clone ID	R2W56
Host species	Mouse
Tested applications	FCM: 1:200-1:400, IF: 1:200-1:1000, IHC: 1:200-1:1000, WB: 1:500-1:2000
Species reactivity	Human, Mouse
Form	Liquid
Storage buffer	0.01M PBS, pH 7.4, 0.05% Sodium Azide.
Concentration	1 mg/ml
Purity	>95% as determined by SDS-PAGE.
Clonality	Monoclonal
Isotype	IgG1
Applications	FCM, IF, IHC, WB
Target	CED-3/ICH-1 prodomain homologous E10-like regulator, CLAP, B-cell CLL/lymphoma 10, BCL10, CARD-containing molecule enhancing NF-kappa-B, Cellular homolog of vCARMEN, cCARMEN, CIPER, Bcl-10, hCLAP, Cellular-E10, CARD-like apoptotic protein, c-E10, Mammalian CARD-containing adapter molecule E10, B-cell lymphoma/leukemia 10, mE10
Purification	Protein A/G purified from cell culture supernatant.
Endotoxin level	Please contact with the lab for this information.
Accession	O95999

Stability and Storage

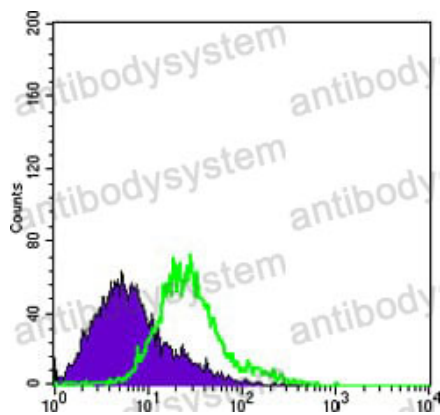
Use a manual defrost freezer and avoid repeated freeze-thaw cycles.

Store at 4°C short term (1-2 weeks). Store at -20°C 12 months. Store at -80°C long term.

Note

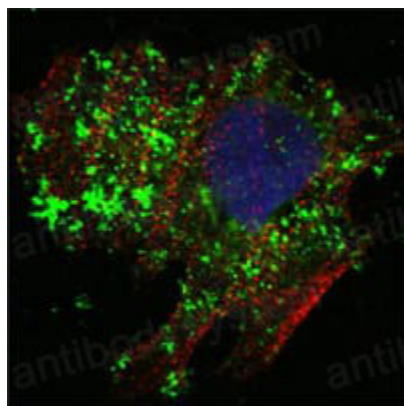
For research use only.

Data Image



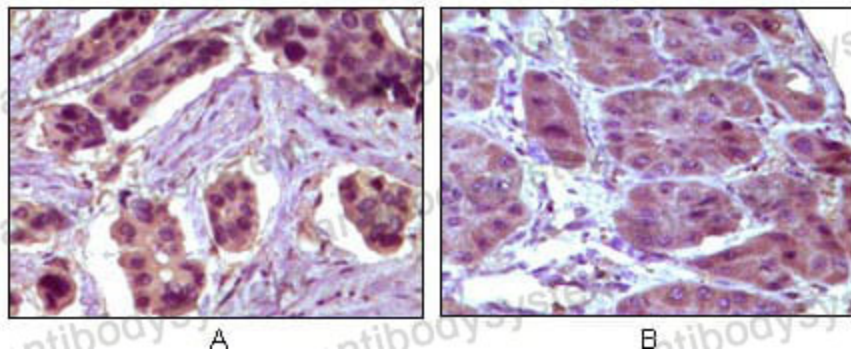
Flow Cytometry

Flow cytometric analysis of Hela cells using BCL10 mouse mAb (green) and negative control (purple).



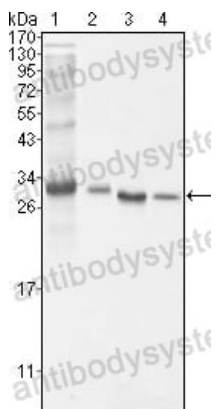
Immunofluorescence

Confocal Immunofluorescence analysis of Hela cells using BCL10 mouse mAb (green). Red: Actin filaments have been labeled with Alexa Fluor-555 phalloidin. Blue: DRAQ5 fluorescent DNA dye.



Immunohistochemical analysis of paraffin-embedded human breast carcinoma (A) and liver carcinoma (B), showing cytoplasmic localization using BCL10 mouse mAb with DAB staining.

Immunohistochemical



Western blot analysis using BCL10 mouse mAb against NIH/3T3 (1), HeLa (2), MCF-7 (3) and Jurkat (4) cell lysate.

Western blot