

Anti-LY6G6D/MEGT1 Antibody (R2W47)

Summary

Catalog No.	RHB78001
Clone ID	R2W47
Host species	Mouse
Tested applications	ELISA: 1:10000, FCM: 1:200-1:400, IF: 1:200-1:1000, WB: 1:500-1:2000
Species reactivity	Human, Mouse, Rat, Monkey
Form	Liquid
Storage buffer	0.01M PBS, pH 7.4, 0.05% Sodium Azide.
Concentration	1 mg/ml
Purity	>95% as determined by SDS-PAGE.
Clonality	Monoclonal
Isotype	IgG1
Applications	ELISA, FCM, IF, WB
Target	MEGT1, G6D, Megakaryocyte-enhanced gene transcript 1 protein, NG25, LY6G6D, C6orf23, Protein Ly6-D, Lymphocyte antigen 6 complex locus protein G6d
Purification	Protein A/G purified from cell culture supernatant.
Endotoxin level	Please contact with the lab for this information.
Accession	O95868

Stability and Storage

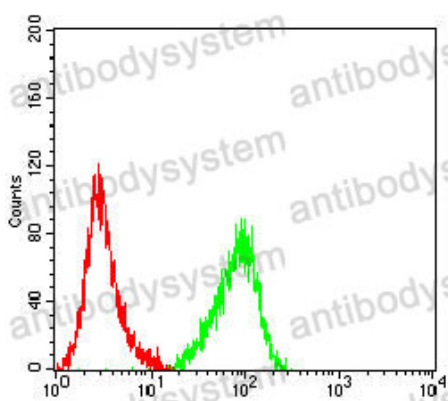
Use a manual defrost freezer and avoid repeated freeze-thaw cycles.

Store at 4°C short term (1-2 weeks). Store at -20°C 12 months. Store at -80°C long term.

Note

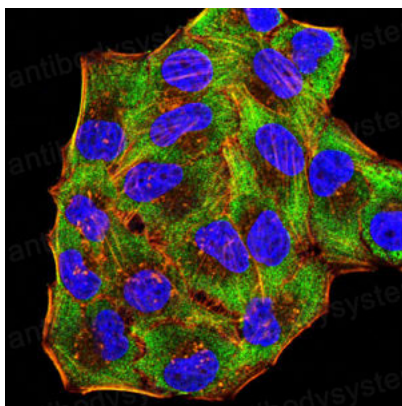
For research use only.

Data Image



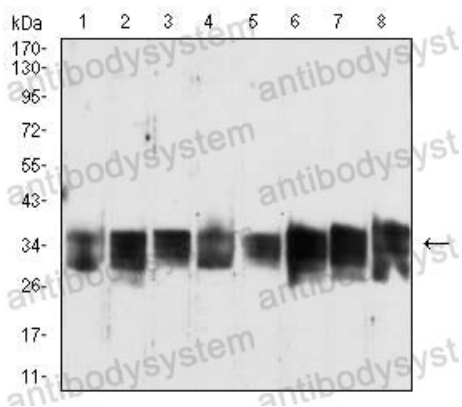
Flow Cytometry

Flow cytometric analysis of Jurkat cells using G6D mouse mAb (green) and negative control (red).



Immunofluorescence

Immunofluorescence analysis of HeLa cells using G6D mouse mAb (green). Blue: DRAQ5 fluorescent DNA dye. Red: Actin filaments have been labeled with Alexa Fluor- 555 phalloidin.



Western blot

Western blot analysis using G6D mouse mAb against Jurkat (1), MCF-7 (2), A549 (3), K562 (4), HeLa (5), C6 (6), COS-7 (7), and NIH/3T3 (8) cell lysate.