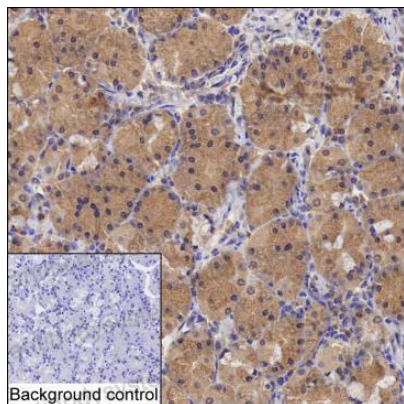


Anti-NADK Antibody (R2W35)

Summary

| | |
|------------------------------|-----------------------------------------------------------------------------------------------------------------------------------------------------------------|
| Catalog No. | RHB68601 |
| Clone ID | R2W35 |
| Host species | Mouse |
| Tested applications | IHC: 1:50-1:200 |
| Species reactivity | Human |
| Form | Liquid |
| Storage buffer | 0.01M PBS, pH 7.4, 0.05% Sodium Azide. |
| Concentration | 1 mg/ml |
| Purity | >95% as determined by SDS-PAGE. |
| Clonality | Monoclonal |
| Isotype | IgG2b |
| Applications | IHC |
| Target | Poly(P)/ATP NAD kinase, NADK, NAD kinase |
| Purification | Protein A/G purified from cell culture supernatant. |
| Endotoxin level | Please contact with the lab for this information. |
| Accession | O95544 |
| Stability and Storage | Use a manual defrost freezer and avoid repeated freeze-thaw cycles. Store at 4°C short term (1-2 weeks). Store at -20°C 12 months. Store at -80°C long term. |
| Note | For research use only. |

Data Image



Immunohistochemical

IHC-P analysis of stomach tissue by NADK antibody (RHB68601). IHC-P was performed using sections of the formalin-fixed paraffin-embedded stomach tissue; Result: Glandular cells are positively stained at the cytoplasm.