

Anti-ABCA1 Antibody (R2W32)

Summary

Catalog No.	RHB67102
Clone ID	R2W32
Host species	Mouse
Tested applications	FCM: 1:200-1:400, IF: 1:200-1:1000, IHC: 1:100-1:500
Species reactivity	Human, Mouse, Rat, Rabbit, Monkey
Form	Liquid
Storage buffer	0.01M PBS, pH 7.4, 0.05% Sodium Azide.
Concentration	1 mg/ml
Purity	>95% as determined by SDS-PAGE.
Clonality	Monoclonal
Isotype	IgG2a
Applications	FCM, IF, IHC
Target	ATP-binding cassette transporter 1, ATP-binding cassette sub-family A member 1, Phospholipid-transporting ATPase ABCA1, ABC-1, ABCA1, ATP-binding cassette 1, Cholesterol efflux regulatory protein, ABC1, CERP
Purification	Protein A/G purified from cell culture supernatant.
Endotoxin level	Please contact with the lab for this information.
Accession	O95477

Stability and Storage

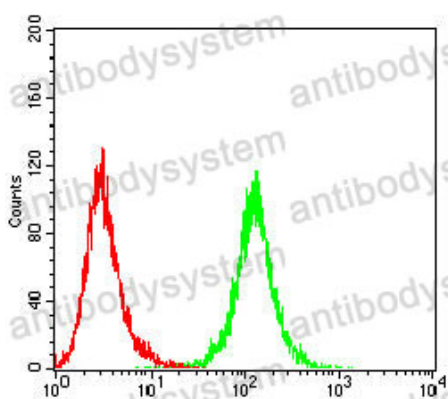
Use a manual defrost freezer and avoid repeated freeze-thaw cycles.

Store at 4°C short term (1-2 weeks). Store at -20°C 12 months. Store at -80°C long term.

Note

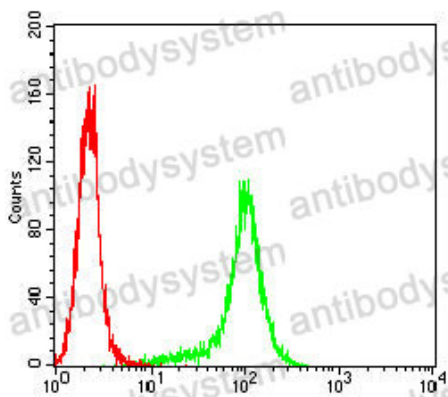
For research use only.

Data Image



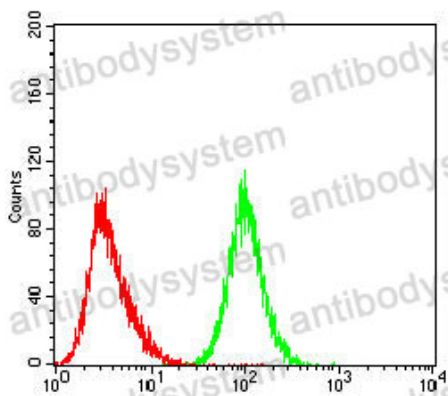
Flow Cytometry

Flow cytometric analysis of bel-7402 cells using ABCA1 mouse mAb (green) and negative control (red).



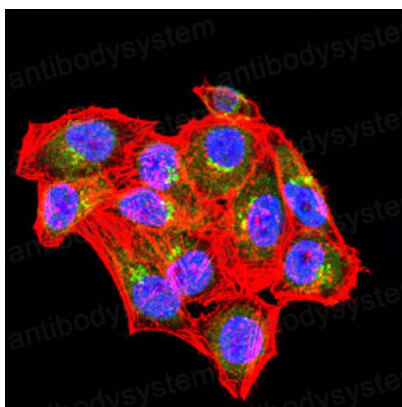
Flow Cytometry

Flow cytometric analysis of Hela cells using ABCA1 mouse mAb (green) and negative control (red).



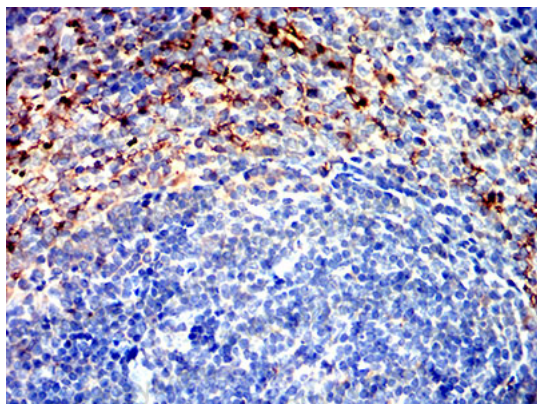
Flow Cytometry

Flow cytometric analysis of Hepg2 cells using ABCA1 mouse mAb (green) and negative control (red).



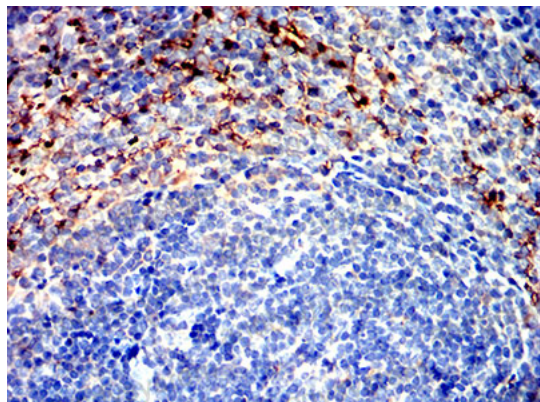
Immunofluorescence

Immunofluorescence analysis of Hela cells using ABCA1 mouse mAb (green). Blue: DRAQ5 fluorescent DNA dye. Red: Actin filaments have been labeled with Alexa Fluor- 555 phalloidin.



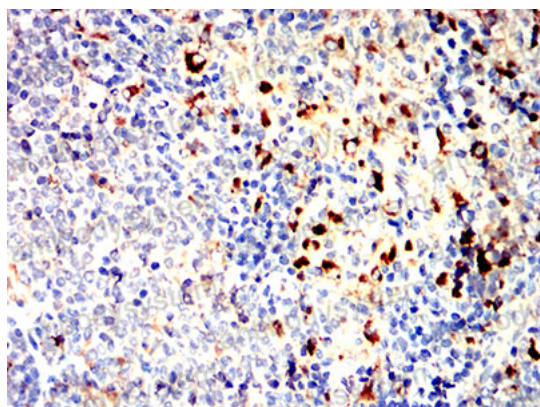
Immunohistochemical

Immunohistochemical analysis of paraffin-embedded Mouse spleen using ABCA1 mouse mAb with DAB staining.



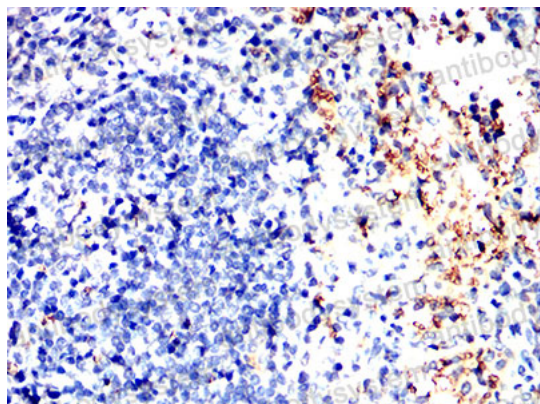
Immunohistochemical

Immunohistochemical analysis of paraffin-embedded Mouse spleen using ABCA1 mouse mAb with DAB staining.



Immunohistochemical

Immunohistochemical analysis of paraffin-embedded Rat spleen using ABCA1 mouse mAb with DAB staining.



Immunohistochemical

Immunohistochemical analysis of paraffin-embedded Rabbit spleen using ABCA1 mouse mAb with DAB staining.