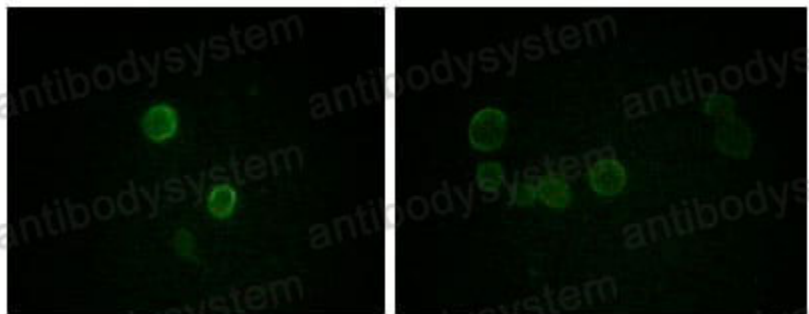


Anti-APOM Antibody (R2W30)

Summary

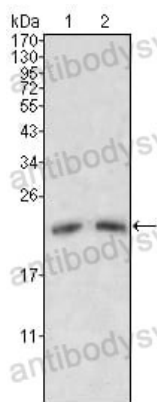
Catalog No.	RHB65501
Clone ID	R2W30
Host species	Mouse
Tested applications	IF: 1:200-1:1000, WB: 1:500-1:2000
Species reactivity	Human
Form	Liquid
Storage buffer	0.01M PBS, pH 7.4, 0.05% Sodium Azide.
Concentration	1 mg/ml
Purity	>95% as determined by SDS-PAGE.
Clonality	Monoclonal
Isotype	IgG1
Applications	IF, WB
Target	Protein G3a, NG20, ApoM, G3A, Apo-M, APOM, Apolipoprotein M
Purification	Protein A/G purified from cell culture supernatant.
Endotoxin level	Please contact with the lab for this information.
Accession	O95445
Stability and Storage	Use a manual defrost freezer and avoid repeated freeze-thaw cycles. Store at 4°C short term (1-2 weeks). Store at -20°C 12 months. Store at -80°C long term.
Note	For research use only.

Data Image



Immunofluorescence analysis of methanol-fixed L-02 (left) and Cos7 (right) cells using ApoM mouse mAb showing cytoplasmic and membrane localization.

Immunofluorescence



Western blot analysis using ApoM mouse mAb against human serum (1, 2).

Western blot