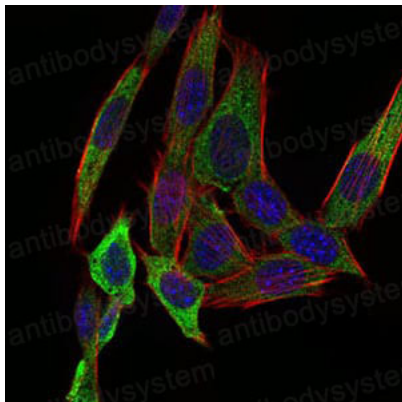


Anti-PAPLN Antibody (R2W29)

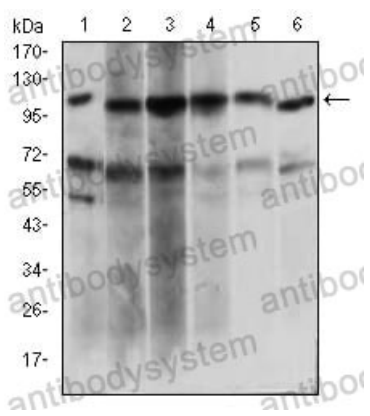
Summary

Catalog No.	RHB65101
Clone ID	R2W29
Host species	Mouse
Tested applications	ELISA: 1:10000, IF: 1:200-1:1000, WB: 1:500-1:2000
Species reactivity	Human, Mouse
Form	Liquid
Storage buffer	0.01M PBS, pH 7.4, 0.05% Sodium Azide.
Concentration	1 mg/ml
Purity	>95% as determined by SDS-PAGE.
Clonality	Monoclonal
Isotype	IgG1
Applications	ELISA, IF, WB
Target	Papilin, PAPLN
Purification	Protein A/G purified from cell culture supernatant.
Endotoxin level	Please contact with the lab for this information.
Accession	O95428
Stability and Storage	Use a manual defrost freezer and avoid repeated freeze-thaw cycles. Store at 4°C short term (1-2 weeks). Store at -20°C 12 months. Store at -80°C long term.
Note	For research use only.

Data Image



Immunofluorescence



Western blot

Immunofluorescence analysis of NIH/3T3 cells using PAPLN mouse mAb (green). Blue: DRAQ5 fluorescent DNA dye. Red: Actin filaments have been labeled with Alexa Fluor-555 phalloidin.

Western blot analysis using PAPLN mouse mAb against Hela (1), HepG2 (2), OCM-1 (3), Raji (4), Jurkat (5), NIH/3T3 (6) cell lysate.