

Anti-ATG7 Antibody (R2W26)

Summary

Catalog No.	RHB61604
Clone ID	R2W26
Host species	Mouse
Tested applications	ELISA: 1:10000, FCM: 1:200-1:400
Species reactivity	Human
Form	Liquid
Storage buffer	0.01M PBS, pH 7.4, 0.05% Sodium Azide.
Concentration	1 mg/ml
Purity	>95% as determined by SDS-PAGE.
Clonality	Monoclonal
Isotype	IgG2b
Applications	ELISA, FCM
Target	hAGP7, ATG7, Ubiquitin-activating enzyme E1-like protein, APG7L, Ubiquitin-like modifier-activating enzyme ATG7, Autophagy-related protein 7, ATG12-activating enzyme E1 ATG7, APG7-like
Purification	Protein A/G purified from cell culture supernatant.
Endotoxin level	Please contact with the lab for this information.
Accession	O95352

Recombinant Proteins & Antibodies

Stability and Storage

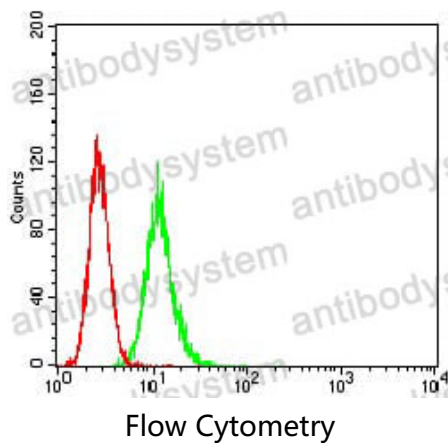
Use a manual defrost freezer and avoid repeated freeze-thaw cycles.

Store at 4°C short term (1-2 weeks). Store at -20°C 12 months. Store at -80°C long term.

Note

For research use only.

Data Image



Flow cytometric analysis of HeLa cells using ATG7 mouse mAb (green) and negative control (red).