

Anti-SMC2 (acetyl K114) Antibody (R2W25)

Summary

Catalog No.	RHB61501
Clone ID	R2W25
Host species	Mouse
Tested applications	IP: 1:100-1:200, WB: 1:500-1:1000
Species reactivity	Human
Form	Liquid
Storage buffer	0.01M PBS, pH 7.4, 0.05% Sodium Azide.
Concentration	1 mg/ml
Purity	>95% as determined by SDS-PAGE.
Clonality	Monoclonal
Isotype	IgG2a
Applications	IP, WB
Target	XCAP-E homolog, SMC2, SMC-2, SMC protein 2, Structural maintenance of chromosomes protein 2, CAPE, SMC2L1, Chromosome-associated protein E, hCAP-E
Purification	Protein A/G purified from cell culture supernatant.
Endotoxin level	Please contact with the lab for this information.
Accession	O95347

Stability and Storage

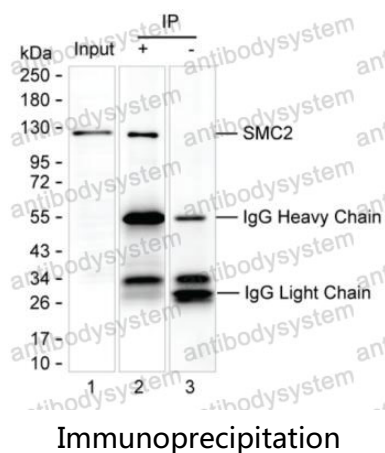
Use a manual defrost freezer and avoid repeated freeze-thaw cycles.

Store at 4°C short term (1-2 weeks). Store at -20°C 12 months. Store at -80°C long term.

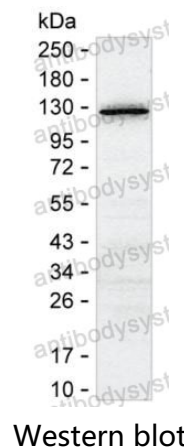
Note

For research use only.

Data Image



Lane 1: Raji lysate; Lane 2: SMC2 immunoprecipitated from Raji lysate by RHB61501; Lane 3: The same as Lane 2 but use IgG isotype control antibody; Result: RHB61501 3 can immunoprecipitate SMC2;



Western blot analysis using SMC2 mouse mAb against Raji lysate