

Anti-KAT7 Antibody (R2W22)

Summary

Catalog No.	RHB58802
Clone ID	R2W22
Host species	Mouse
Tested applications	ELISA: 1:10000, WB: 1:500-1:2000
Species reactivity	Human, Mouse, Monkey
Form	Liquid
Storage buffer	0.01M PBS, pH 7.4, 0.05% Sodium Azide.
Concentration	1 mg/ml
Purity	>95% as determined by SDS-PAGE.
Clonality	Monoclonal
Isotype	IgG1
Applications	ELISA, WB
Target	KAT7, HBOa, HBO1, MYST-2, MYST2, Lysine acetyltransferase 7, MOZ, YBF2/SAS3, SAS2 and TIP60 protein 2, Histone acetyltransferase binding to ORC1, Histone acetyltransferase KAT7
Purification	Protein A/G purified from cell culture supernatant.
Endotoxin level	Please contact with the lab for this information.
Accession	O95251

Recombinant Proteins & Antibodies

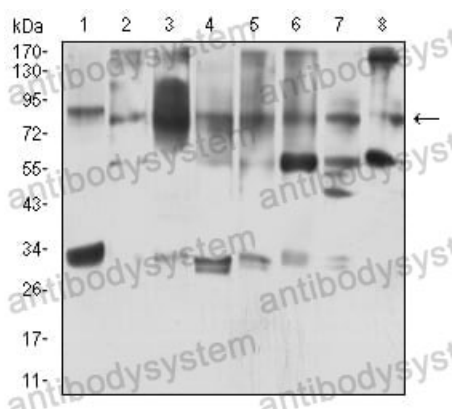
Stability and Storage

Use a manual defrost freezer and avoid repeated freeze-thaw cycles.

Store at 4°C short term (1-2 weeks). Store at -20°C 12 months. Store at -80°C long term.

Note

For research use only.

Data Image

Western blot

Western blot analysis using KAT7 mouse mAb against MOLT4 (1), COS7 (2), F9 (3), HepG2 (4), PC-2 (5), U251 (6), MCF-7 (7), and NIH/3T3 (8) cell lysate.