

Anti-KAT7 Antibody (R2W21)

Summary

Catalog No.	RHB58803
Clone ID	R2W21
Host species	Mouse
Tested applications	ELISA: 1:10000, IHC: 1:200-1:1000, WB: 1:500-1:2000
Species reactivity	Human, Mouse, Monkey
Form	Liquid
Storage buffer	0.01M PBS, pH 7.4, 0.05% Sodium Azide.
Concentration	1 mg/ml
Purity	>95% as determined by SDS-PAGE.
Clonality	Monoclonal
Isotype	IgG1
Applications	ELISA, IHC, WB
Target	KAT7, HBOa, HBO1, MYST-2, MYST2, Lysine acetyltransferase 7, MOZ, YBF2/SAS3, SAS2 and TIP60 protein 2, Histone acetyltransferase binding to ORC1, Histone acetyltransferase KAT7
Purification	Protein A/G purified from cell culture supernatant.
Endotoxin level	Please contact with the lab for this information.
Accession	O95251

Stability and Storage

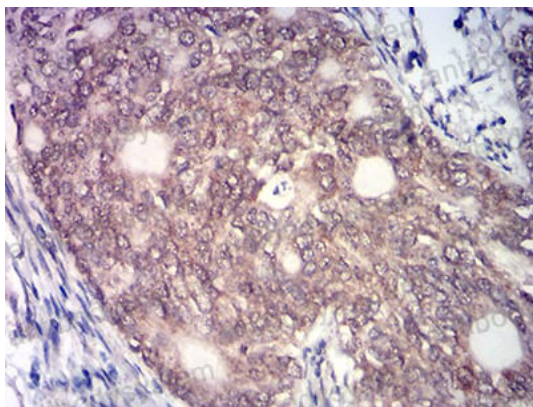
Use a manual defrost freezer and avoid repeated freeze-thaw cycles.

Store at 4°C short term (1-2 weeks). Store at -20°C 12 months. Store at -80°C long term.

Note

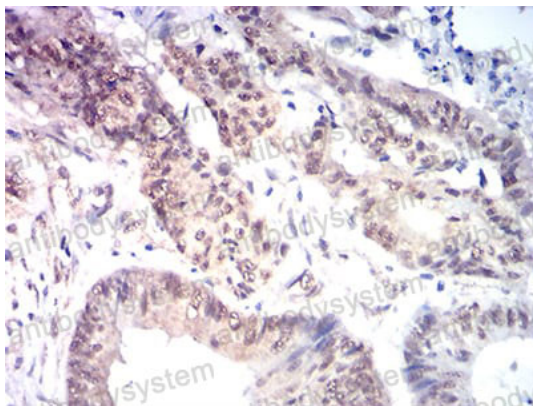
For research use only.

Data Image



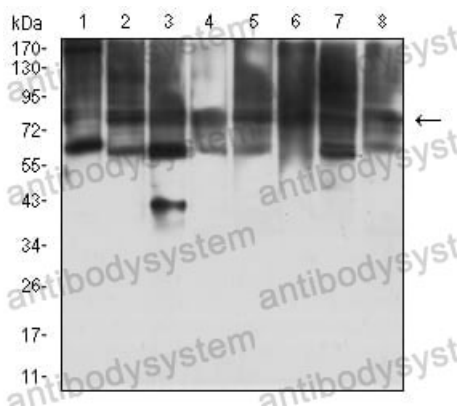
Immunohistochemical

Immunohistochemical analysis of paraffin-embedded human cervical cancer tissues using KAT7 mouse mAb with DAB staining.



Immunohistochemical

Immunohistochemical analysis of paraffin-embedded human colon cancer tissues using KAT7 mouse mAb with DAB staining.



Western blot

Western blot analysis using KAT7 mouse mAb against MOLT4 (1), COS7 (2), F9 (3), HepG2 (4), PC-2 (5), U251 (6), MCF-7 (7), and NIH/3T3 (8) cell lysate.