

Anti-RTN3 Antibody (R2W20)

Summary

Catalog No.	RHB56402
Clone ID	R2W20
Host species	Mouse
Tested applications	IF: 1:200-1:1000
Species reactivity	Human
Form	Liquid
Storage buffer	0.01M PBS, pH 7.4, 0.05% Sodium Azide.
Concentration	1 mg/ml
Purity	>95% as determined by SDS-PAGE.
Clonality	Monoclonal
Isotype	IgG2a
Applications	IF
Target	Neuroendocrine-specific protein-like II, ASYIP, NSP-like protein II, NSPL2, NSP-like protein 2, NSPLII, RTN3, Neuroendocrine-specific protein-like 2, Reticulon-3, Homolog of ASY protein, HAP
Purification	Protein A/G purified from cell culture supernatant.
Endotoxin level	Please contact with the lab for this information.
Accession	O95197

Stability and Storage

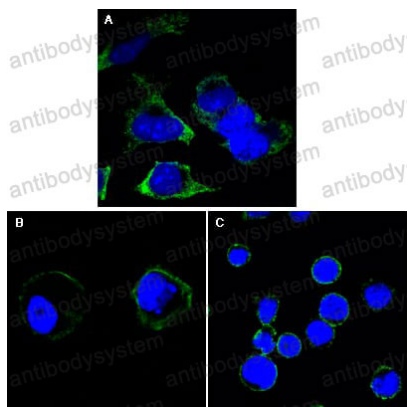
Use a manual defrost freezer and avoid repeated freeze-thaw cycles.

Store at 4°C short term (1-2 weeks). Store at -20°C 12 months. Store at -80°C long term.

Note

For research use only.

Data Image



Confocal Immunofluorescence analysis of Hela (A), A431 (B) and THP-1 (C) cells using RTN3 mouse mAb (green). Blue: DRAQ5 fluorescent DNA dye.

Immunofluorescence