

Anti-ELP1 Antibody (R2W16)

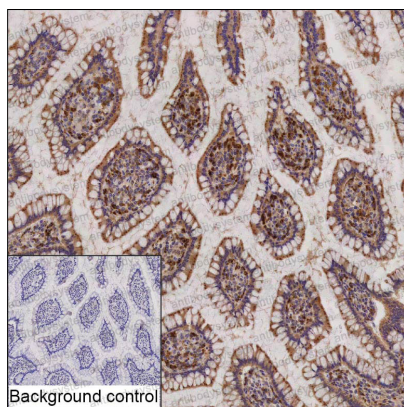
Summary

Catalog No.	RHB54801
Clone ID	R2W16
Host species	Mouse
Tested applications	IHC: 1:25-1:200
Species reactivity	Human
Form	Liquid
Storage buffer	0.01M PBS, pH 7.4, 0.05% Sodium Azide.
Concentration	1 mg/ml
Purity	>95% as determined by SDS-PAGE.
Clonality	Monoclonal
Isotype	IgG1
Applications	IHC
Target	IKBKAP, IKK complex-associated protein, p150, IKAP, ELP1, Elongator complex protein 1, IkappaB kinase complex-associated protein
Purification	Protein A/G purified from cell culture supernatant.
Endotoxin level	Please contact with the lab for this information.
Accession	O95163
Stability and Storage	Use a manual defrost freezer and avoid repeated freeze-thaw cycles. Store at 4°C short term (1-2 weeks). Store at -20°C 12 months. Store at -80°C long term.

Note

For research use only.

Data Image



Immunohistochemical

IHC-P analysis of small intestine tissue by ELP1 antibody (RHB54801). IHC-P was performed using sections of the formalin-fixed paraffin-embedded small intestine tissue; Result: Glandular cells and cells in lamina propria are positively stained at the cytoplasm.