

Anti-SEC31A Antibody (R2W10)

Summary

Catalog No.	RHB50401
Clone ID	R2W10
Host species	Mouse
Tested applications	ELISA: 1:10000, IHC: 1:200-1:1000
Species reactivity	Human
Form	Liquid
Storage buffer	0.01M PBS, pH 7.4, 0.05% Sodium Azide.
Concentration	1 mg/ml
Purity	>95% as determined by SDS-PAGE.
Clonality	Monoclonal
Isotype	IgG1
Applications	ELISA, IHC
Target	Protein transport protein Sec31A, SEC31-related protein A, SEC31-like protein 1, ABP130, Web1-like protein, ABP125, SEC31L1, KIAA0905, SEC31A
Purification	Protein A/G purified from cell culture supernatant.
Endotoxin level	Please contact with the lab for this information.
Accession	O94979

Stability and Storage

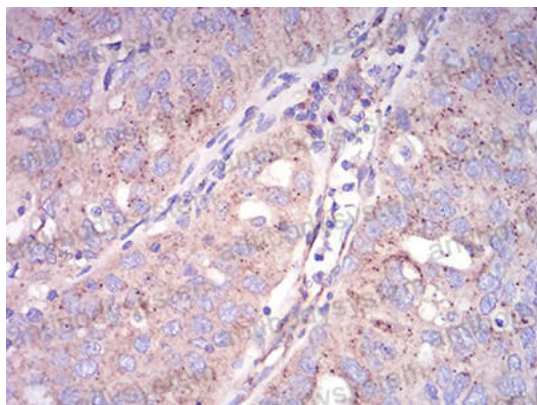
Use a manual defrost freezer and avoid repeated freeze-thaw cycles.

Store at 4°C short term (1-2 weeks). Store at -20°C 12 months. Store at -80°C long term.

Note

For research use only.

Data Image



Immunohistochemical analysis of paraffin-embedded human ovarian cancer tissues using SEC31A mouse mAb with DAB staining.

Immunohistochemical