

Anti-DDAH1 Antibody (R2W06)

Summary

Catalog No.	RHB42403
Clone ID	R2W06
Host species	Mouse
Tested applications	IHC: 1:2000, WB: 1:500-1:1000
Species reactivity	Human, Mouse, Rat
Form	Liquid
Storage buffer	0.01M PBS, pH 7.4, 0.05% Sodium Azide.
Concentration	1 mg/ml
Purity	>95% as determined by SDS-PAGE.
Clonality	Monoclonal
Isotype	IgG1
Applications	IHC, WB
Target	DDAH, DDAH-1, N(G),N(G)-dimethylarginine dimethylaminohydrolase 1, Dimethylarginine dimethylaminohydrolase 1, DDAH1, Dimethylargininase-1, DDAH1
Purification	Protein A/G purified from cell culture supernatant.
Endotoxin level	Please contact with the lab for this information.
Accession	O94760

Stability and Storage

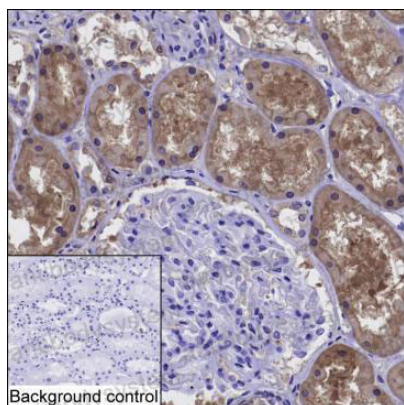
Use a manual defrost freezer and avoid repeated freeze-thaw cycles.

Store at 4°C short term (1-2 weeks). Store at -20°C 12 months. Store at -80°C long term.

Note

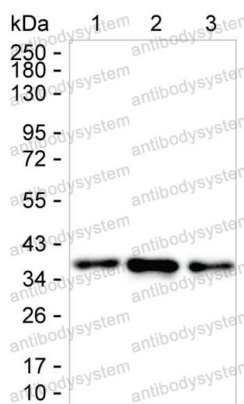
For research use only.

Data Image



Immunohistochemical

IHC-P analysis of kidney tissue by DDAH1 antibody (RHB42403). IHC-P was performed using sections of the formalin-fixed paraffin-embedded kidney tissue; Result: Cells of tubules are positively stained at the cytoplasm.



Western blot

Lane 1: 15 µg of SH-SY5Y lysate; Lane 2: 15 µg of rat kidney tissue lysate; Lane 3: 15 µg of mouse kidney tissue lysate; Result: RHB42403 can detect DDAH1 by Western blotting;