

Anti-ALDH1L1 Antibody (R2V94)

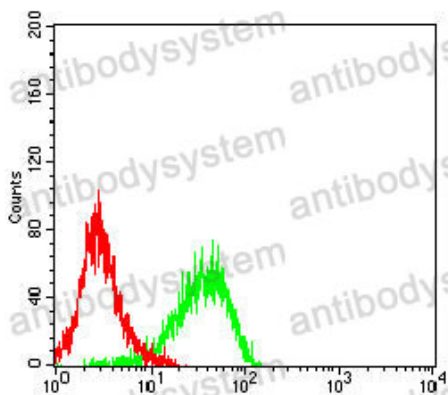
Summary

Catalog No.	RHB34206
Clone ID	R2V94
Host species	Mouse
Tested applications	ELISA: 1:10000, FCM: 1:200-1:400, IHC: 1:200-1:1000, WB: 1:500-1:2000
Species reactivity	Human, Rat
Form	Liquid
Storage buffer	0.01M PBS, pH 7.4, 0.05% Sodium Azide.
Concentration	1 mg/ml
Purity	>95% as determined by SDS-PAGE.
Clonality	Monoclonal
Isotype	IgG1
Applications	ELISA, FCM, IHC, WB
Target	10-FTHFDH, FDH, Aldehyde dehydrogenase family 1 member L1, Cytosolic 10-formyltetrahydrofolate dehydrogenase, ALDH1L1, FTHFD
Purification	Protein A/G purified from cell culture supernatant.
Endotoxin level	Please contact with the lab for this information.
Accession	O75891
Stability and Storage	Use a manual defrost freezer and avoid repeated freeze-thaw cycles. Store at 4°C short term (1-2 weeks). Store at -20°C 12 months. Store at -80°C long term.

Note

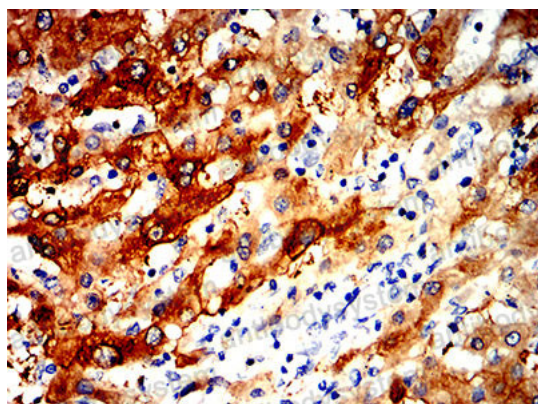
For research use only.

Data Image



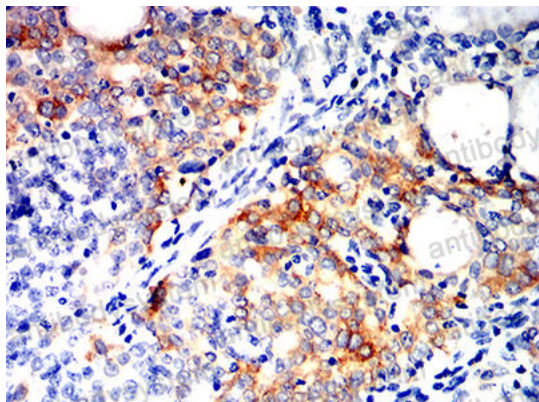
Flow Cytometry

Flow cytometric analysis of Jurkat cells using ALDH1L1 mouse mAb (green) and negative control (red).



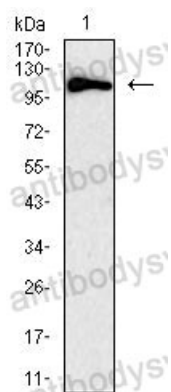
Immunohistochemical

Immunohistochemical analysis of paraffin-embedded human liver cancer tissues using ALDH1L1 mouse mAb with DAB staining.



Immunohistochemical

Immunohistochemical analysis of paraffin-embedded human cervical cancer tissues using ALDH1L1 mouse mAb with DAB staining.



Western blot

Western blot analysis using ALDH1L1 mouse mAb against Rat kidney (1) tissue lysate.