

Anti-IDH1 Antibody (R2V90)

Summary

Catalog No.	RHB33408
Clone ID	R2V90
Host species	Mouse
Tested applications	ELISA: 1:10000, FCM: 1:200-1:400, WB: 1:500-1:2000
Species reactivity	Human, Mouse, Monkey
Form	Liquid
Storage buffer	0.01M PBS, pH 7.4, 0.05% Sodium Azide.
Concentration	1 mg/ml
Purity	>95% as determined by SDS-PAGE.
Clonality	Monoclonal
Isotype	IgG1
Applications	ELISA, FCM, WB
Target	IDH1, IDH, NADP(+)-specific ICDH, Isocitrate dehydrogenase [NADP] cytoplasmic, PICD, IDP, Cytosolic NADP-isocitrate dehydrogenase, Oxalosuccinate decarboxylase
Purification	Protein A/G purified from cell culture supernatant.
Endotoxin level	Please contact with the lab for this information.
Accession	O75874

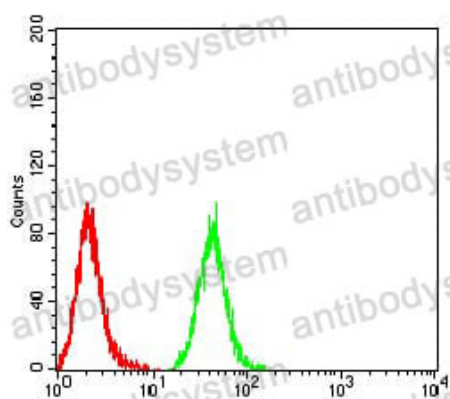
Stability and Storage

Use a manual defrost freezer and avoid repeated freeze-thaw cycles.

Store at 4°C short term (1-2 weeks). Store at -20°C 12 months. Store at -80°C long term.

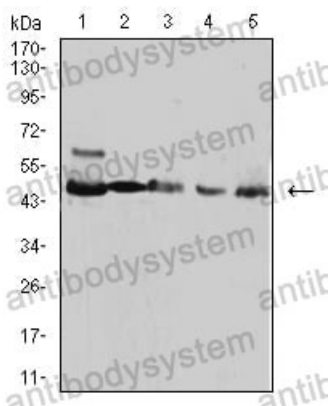
Note

For research use only.

Data Image

Flow Cytometry

Flow cytometric analysis of Hela cells using IDH1 mouse mAb (green) and negative control (red).



Western blot

Western blot analysis using IDH1 mouse mAb against HepG2 (1), NIH/3T3 (2), C2C12 (3), COS7 (4), and SW480 (5) cell lysate.