

Anti-GRAP2 Antibody (R2V89)

Summary

Catalog No.	RHB30801
Clone ID	R2V89
Host species	Mouse
Tested applications	WB: 1:500-1:1000
Species reactivity	Human
Form	Liquid
Storage buffer	0.01M PBS, pH 7.4, 0.5% BSA, 0.05% Sodium Azide and 50% Glycerol.
Concentration	1 mg/ml
Purity	>95% as determined by SDS-PAGE.
Clonality	Monoclonal
Isotype	IgG2b
Applications	WB
Target	GADS, GRID, Grf-40, Adapter protein GRID, P38, GRAP2, Grf40 adapter protein, Growth factor receptor-binding protein, GRBLG, GRB2L, Protein GADS, GRB-2-like protein, SH3-SH2-SH3 adapter Mona, GRBX, Hematopoietic cell-associated adapter protein GrpL, GRB2-related adapter protein 2
Purification	Protein A/G purified from cell culture supernatant.
Endotoxin level	Please contact with the lab for this information.
Accession	O75791

Stability and Storage

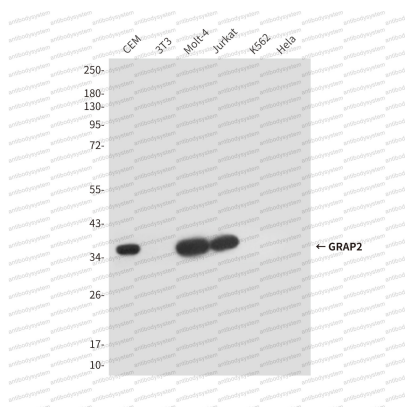
Use a manual defrost freezer and avoid repeated freeze-thaw cycles.

Store at 4°C short term (1-2 weeks). Store at -20°C 12 months. Store at -80°C long term.

Note

For research use only.

Data Image



Western blot

Western blot analysis of GRAP2 in GRAP2 positive (CEM, Molt4, Jurkat) and negative (3T3, K562, Hela) lysates using GRAP2 antibody.