

Anti-ATP6AP2/Prorenin receptor Antibody (R2V88)

Summary

Catalog No.	RHB30702
Clone ID	R2V88
Host species	Mouse
Tested applications	IHC: 1:20-1:100
Species reactivity	Human
Form	Liquid
Storage buffer	0.01M PBS, pH 7.4, 0.05% Sodium Azide.
Concentration	1 mg/ml
Purity	>95% as determined by SDS-PAGE.
Clonality	Monoclonal
Isotype	IgG1
Applications	IHC
Target	Renin/prorenin receptor, ER-localized type I transmembrane adapter, ATPase H(+)-transporting lysosomal accessory protein 2, CAPER, ATP6M8-9, Embryonic liver differentiation factor 10, ATP6AP2, ATPase H(+)-transporting lysosomal-interacting protein 2, V-ATPase M8.9 subunit, ATP6IP2, Renin receptor, N14F, ELDF10, Vacuolar ATP synthase membrane sector-associated protein M8-9
Purification	Protein A/G purified from cell culture supernatant.
Endotoxin level	Please contact with the lab for this information.
Accession	O75787

Stability and Storage

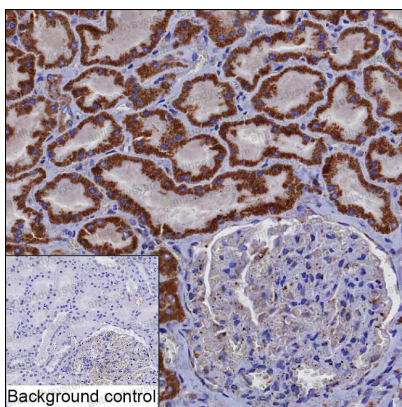
Use a manual defrost freezer and avoid repeated freeze-thaw cycles.

Store at 4°C short term (1-2 weeks). Store at -20°C 12 months. Store at -80°C long term.

Note

For research use only.

Data Image



Immunohistochemical

IHC-P analysis of kidney tissue by ATP6AP2 antibody (RHB30702). IHC-P was performed using sections of the formalin-fixed paraffin-embedded kidney tissue; Result: Cells in tubules are positively stained at the cytoplasm.