

Anti-ADAP1 Antibody (R2V87)

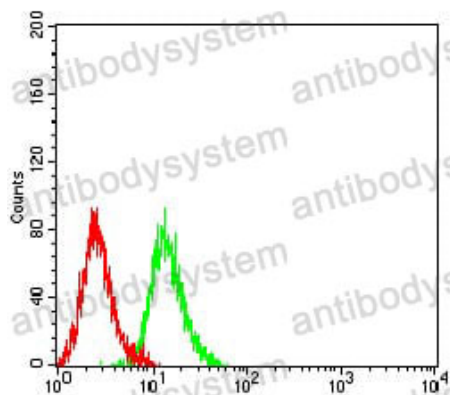
Summary

Catalog No.	RHB28701
Clone ID	R2V87
Host species	Mouse
Tested applications	ELISA: 1:10000, FCM: 1:200-1:400, WB: 1:500-1:2000
Species reactivity	Human, Rat
Form	Liquid
Storage buffer	0.01M PBS, pH 7.4, 0.05% Sodium Azide.
Concentration	1 mg/ml
Purity	>95% as determined by SDS-PAGE.
Clonality	Monoclonal
Isotype	IgG1
Applications	ELISA, FCM, WB
Target	CENTA1, Centaurin-alpha-1, ADAP1, Arf-GAP with dual PH domain-containing protein 1, Cnt-a1, Putative MAPK-activating protein PM25
Purification	Protein A/G purified from cell culture supernatant.
Endotoxin level	Please contact with the lab for this information.
Accession	O75689
Stability and Storage	Use a manual defrost freezer and avoid repeated freeze-thaw cycles. Store at 4°C short term (1-2 weeks). Store at -20°C 12 months. Store at -80°C long term.

Note

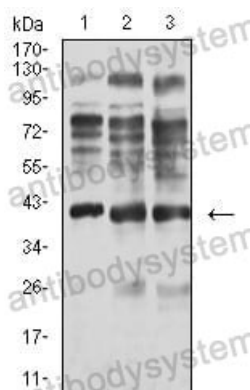
For research use only.

Data Image



Flow Cytometry

Flow cytometric analysis of K562 cells using ADAP1 mouse mAb (green) and negative control (red).



Western blot

Western blot analysis using ADAP1 mouse mAb against C6 (1), A549 (2), and HepG2 (3) cell lysate.