

# Anti-TAF5L Antibody (R2V78)

## Summary

---

<b>Catalog No.</b>	RHB23701
<b>Clone ID</b>	R2V78
<b>Host species</b>	Mouse
<b>Tested applications</b>	IHC: 1:20-1:100
<b>Species reactivity</b>	Human
<b>Form</b>	Liquid
<b>Storage buffer</b>	0.01M PBS, pH 7.4, 0.05% Sodium Azide.
<b>Concentration</b>	1 mg/ml
<b>Purity</b>	>95% as determined by SDS-PAGE.
<b>Clonality</b>	Monoclonal
<b>Isotype</b>	IgG2b
<b>Applications</b>	IHC
<b>Target</b>	PAF65-beta, TAF5L, TAF5-like RNA polymerase II p300/CBP-associated factor-associated factor 65 kDa subunit 5L, PCAF-associated factor 65 beta, PAF65B
<b>Purification</b>	Protein A/G purified from cell culture supernatant.
<b>Endotoxin level</b>	Please contact with the lab for this information.
<b>Accession</b>	O75529

**Stability and Storage**

Use a manual defrost freezer and avoid repeated freeze-thaw cycles.

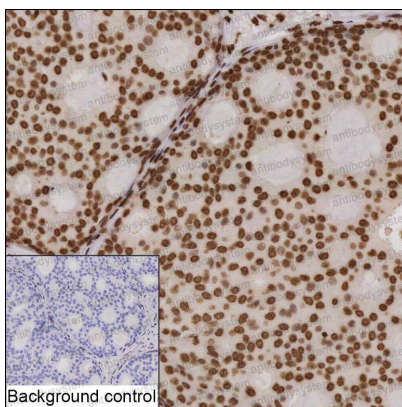
Store at 4°C short term (1-2 weeks). Store at -20°C 12 months. Store at -80°C long term.

**Note**

For research use only.

## Data Image

---



Immunohistochemical

IHC-P analysis of breast cancer tissue by TAF5L antibody (RHB23701). IHC-P was performed using sections of the formalin-fixed paraffin-embedded breast cancer tissue; Result: Tumor cells are positively stained at the nuclei.