

Anti-PSIP1 Antibody (R2V74)

Summary

Catalog No.	RHB22004
Clone ID	R2V74
Host species	Mouse
Tested applications	ELISA: 1:10000, IF: 1:200-1:1000, IHC: 1:200-1:1000, WB: 1:500-1:2000
Species reactivity	Human, Rat, Monkey
Form	Liquid
Storage buffer	0.01M PBS, pH 7.4, 0.05% Sodium Azide.
Concentration	1 mg/ml
Purity	>95% as determined by SDS-PAGE.
Clonality	Monoclonal
Isotype	IgG1
Applications	ELISA, IF, IHC, WB
Target	Transcriptional coactivator p75/p52, CLL-associated antigen KW-7, PSIP1, DFS70, Dense fine speckles 70 kDa protein, DFS 70, PC4 and SFRS1-interacting protein, LEDGF, PSIP2, Lens epithelium-derived growth factor
Purification	Protein A/G purified from cell culture supernatant.
Endotoxin level	Please contact with the lab for this information.
Accession	O75475

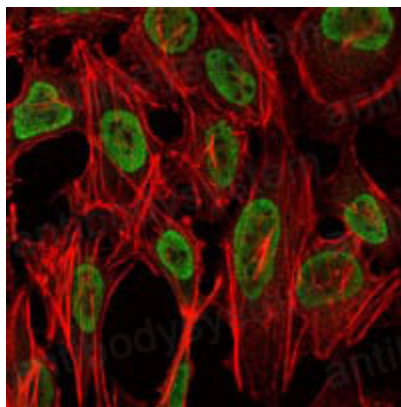
Stability and Storage

Use a manual defrost freezer and avoid repeated freeze-thaw cycles.

Store at 4°C short term (1-2 weeks). Store at -20°C 12 months. Store at -80°C long term.

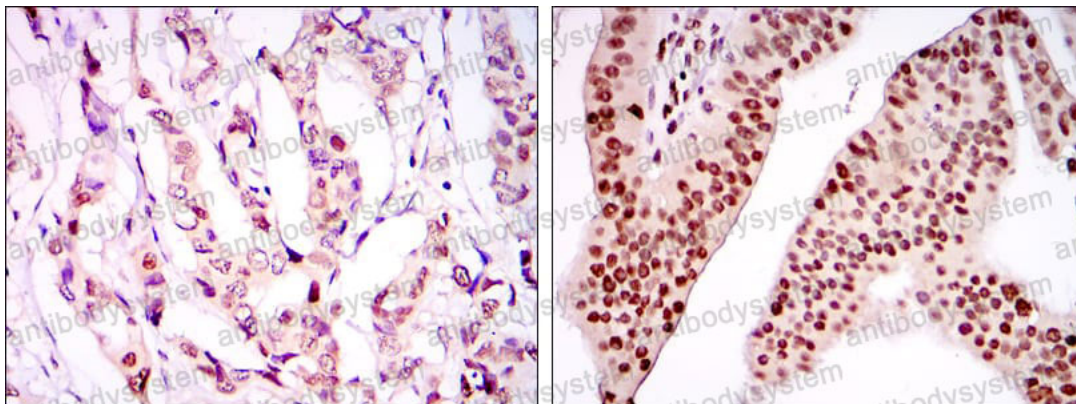
Note

For research use only.

Data Image

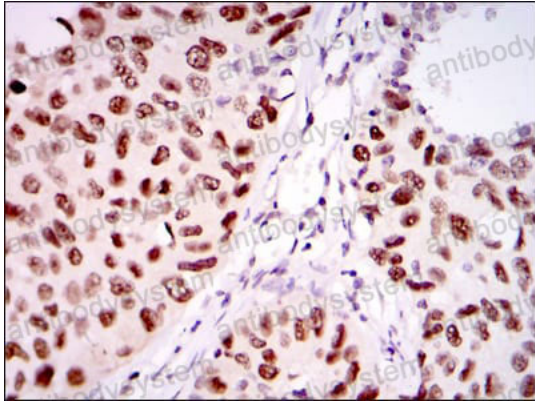
Immunofluorescence

Immunofluorescence analysis of NIH/3T3 cells using PSIP1 mouse mAb (green). Red: Actin filaments have been labeled with Alexa Fluor-555 phalloidin.



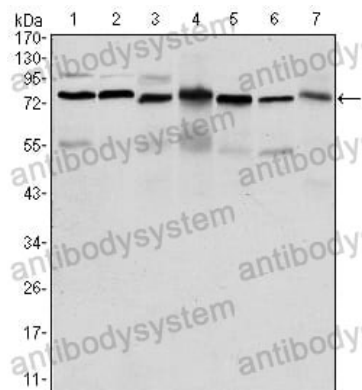
Immunohistochemical

Immunohistochemical analysis of paraffin-embedded human breast cancer tissues (left) and ovarian cancer tissues (right) using PSIP1 mouse mAb with DAB staining.



Immunohistochemical analysis of paraffin-embedded human lung cancer tissues (left) and brain tissues (right) using PSIP1 mouse mAb with DAB staining.

Immunohistochemical



Western blot

Western blot analysis using PSIP1 mouse mAb against HepG2 (1), Jurkat (2), K562 (3), Cos7 (4), PC-12 (5), Hela (6), and NIH/3T3 (7) cell lysate.