

# Anti-ERN1 Antibody (R2V70)

## Summary

---

<b>Catalog No.</b>	RHB21303
<b>Clone ID</b>	R2V70
<b>Host species</b>	Mouse
<b>Tested applications</b>	IHC: 1:200-1:1000, WB: 1:500-1:2000
<b>Species reactivity</b>	Human
<b>Form</b>	Liquid
<b>Storage buffer</b>	0.01M PBS, pH 7.4, 0.05% Sodium Azide.
<b>Concentration</b>	1 mg/ml
<b>Purity</b>	>95% as determined by SDS-PAGE.
<b>Clonality</b>	Monoclonal
<b>Isotype</b>	IgG1
<b>Applications</b>	IHC, WB
<b>Target</b>	Endoplasmic reticulum-to-nucleus signaling 1, IRE1a, ERN1, Ire1-alpha, hIRE1p, Serine/threonine-protein kinase/endoribonuclease IRE1, Inositol-requiring protein 1, IRE1
<b>Purification</b>	Protein A/G purified from cell culture supernatant.
<b>Endotoxin level</b>	Please contact with the lab for this information.
<b>Accession</b>	O75460

**Stability and Storage**

Use a manual defrost freezer and avoid repeated freeze-thaw cycles.

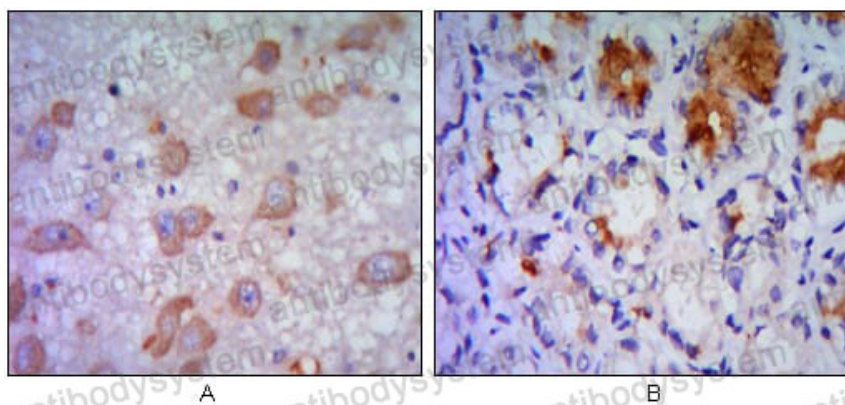
Store at 4°C short term (1-2 weeks). Store at -20°C 12 months. Store at -80°C long term.

**Note**

For research use only.

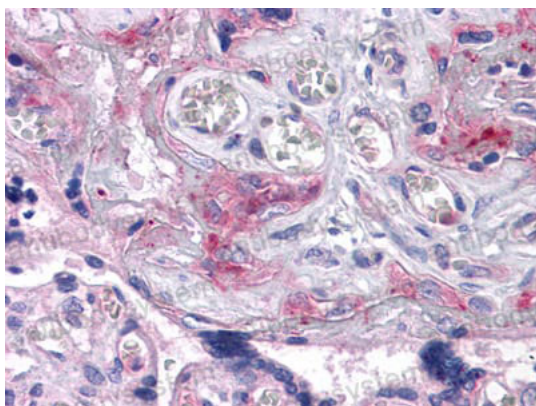
**Data Image**

---



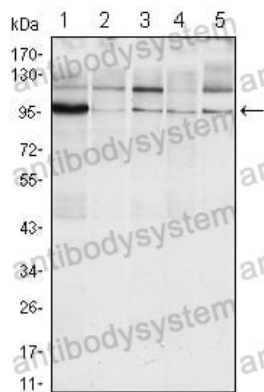
Immunohistochemical analysis of paraffin-embedded human brain tissue (A) and stomach tissue (B), showing cytoplasmic localization using ERN1 mouse mAb with DAB staining.

Immunohistochemical



Immunohistochemical analysis of paraffin-embedded human Placenta tissues using ERN1 mouse mAb

Immunohistochemical



Western blot

Western blot analysis using ERN1 mouse mAb against Raji (1), A431 (2), Jurkat (3), HeLa(4) and HEK293 (5) cell lysate.