

Anti-CD108/SEMA7A Antibody (R2V65)

Summary

Catalog No.	RHB14802
Clone ID	R2V65
Host species	Mouse
Tested applications	ELISA: 1:10000, WB: 1:500-1:2000
Species reactivity	Human
Form	Liquid
Storage buffer	0.01M PBS, pH 7.4, 0.05% Sodium Azide.
Concentration	1 mg/ml
Purity	>95% as determined by SDS-PAGE.
Clonality	Monoclonal
Isotype	IgG1
Applications	ELISA, WB
Target	CDw108, Semaphorin-L, Sema L, SEMA7A, CD108, JMH blood group antigen, Semaphorin-K1, SEMAL, Sema K1, Semaphorin-7A, John-Milton-Hargen human blood group Ag
Purification	Protein A/G purified from cell culture supernatant.
Endotoxin level	Please contact with the lab for this information.
Accession	O75326

Stability and Storage

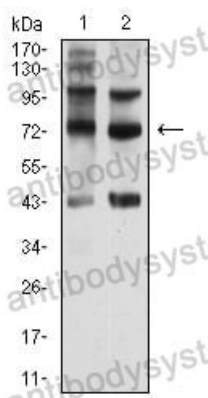
Use a manual defrost freezer and avoid repeated freeze-thaw cycles.

Store at 4°C short term (1-2 weeks). Store at -20°C 12 months. Store at -80°C long term.

Note

For research use only.

Data Image



Western blot

Western blot analysis using CD108 mouse mAb against Hela (1) and Y-79 (2) cell lysate.