

Anti-CDH16 Antibody (R2V62)

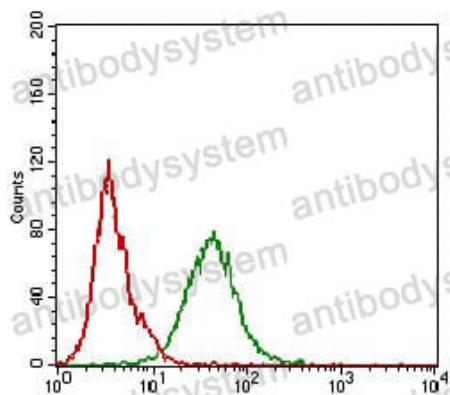
Summary

Catalog No.	RHB13901
Clone ID	R2V62
Host species	Mouse
Tested applications	ELISA: 1:10000, FCM: 1:200-1:400, IF: 1:200-1:1000, IHC: 1:200-1:1000, WB: 1:500-1:2000
Species reactivity	Human
Form	Liquid
Storage buffer	0.01M PBS, pH 7.4, 0.05% Sodium Azide.
Concentration	1 mg/ml
Purity	>95% as determined by SDS-PAGE.
Clonality	Monoclonal
Isotype	IgG1
Applications	ELISA, FCM, IF, IHC, WB
Target	Ksp-cadherin, Cadherin-16, CDH16, Kidney-specific cadherin
Purification	Protein A/G purified from cell culture supernatant.
Endotoxin level	Please contact with the lab for this information.
Accession	O75309
Stability and Storage	Use a manual defrost freezer and avoid repeated freeze-thaw cycles. Store at 4°C short term (1-2 weeks). Store at -20°C 12 months. Store at -80°C long term.

Note

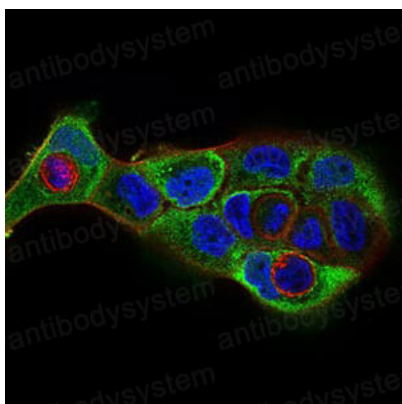
For research use only.

Data Image



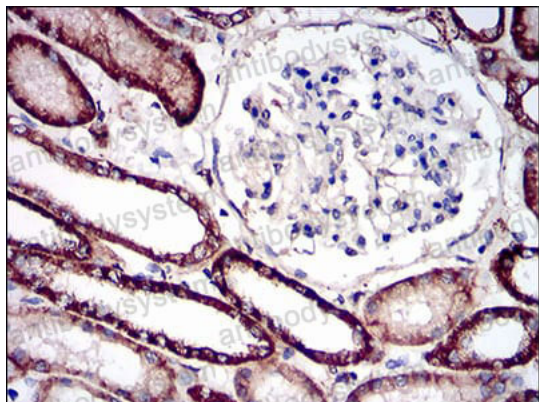
Flow Cytometry

Flow cytometric analysis of A431 cells using CDH16 mouse mAb (green) and negative control (red).



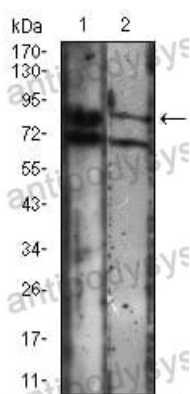
Immunofluorescence

Immunofluorescence analysis of A431 cells using CDH16 mouse mAb (green). Blue: DRAQ5 fluorescent DNA dye. Red: Actin filaments have been labeled with Alexa Fluor-555 phalloidin.



Immunohistochemical

Immunohistochemical analysis of paraffin-embedded human kidney tissues using CDH16 mouse mAb with DAB staining.



Western blot

Western blot analysis using CDH16 mouse mAb against A431 (1), Jurkat (2) cell lysate.