

Anti-KDM4A Antibody (R2V58)

Summary

Catalog No.	RHB11506
Clone ID	R2V58
Host species	Mouse
Tested applications	ELISA: 1:10000, FCM: 1:200-1:400, IF: 1:200-1:1000
Species reactivity	Human
Form	Liquid
Storage buffer	0.01M PBS, pH 7.4, 0.05% Sodium Azide.
Concentration	1 mg/ml
Purity	>95% as determined by SDS-PAGE.
Clonality	Monoclonal
Isotype	IgG1
Applications	ELISA, FCM, IF
Target	Lysine-specific demethylase 4A, JMJD2, Jumonji domain-containing protein 2A, KDM4A, KIAA0677, JHDM3A, [histone H3]-trimethyl-L-lysine(9) demethylase 4A, [histone H3]-trimethyl-L-lysine(36) demethylase 4A, JMJD2A, JmjC domain-containing histone demethylation protein 3A
Purification	Protein A/G purified from cell culture supernatant.
Endotoxin level	Please contact with the lab for this information.
Accession	O75164

Stability and Storage

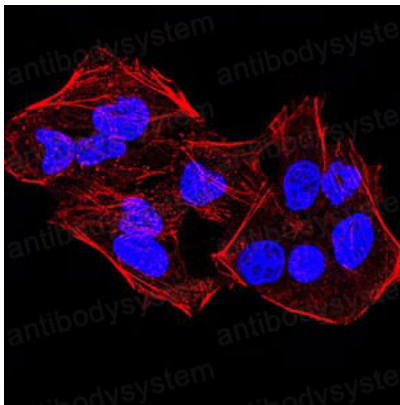
Use a manual defrost freezer and avoid repeated freeze-thaw cycles.

Store at 4°C short term (1-2 weeks). Store at -20°C 12 months. Store at -80°C long term.

Note

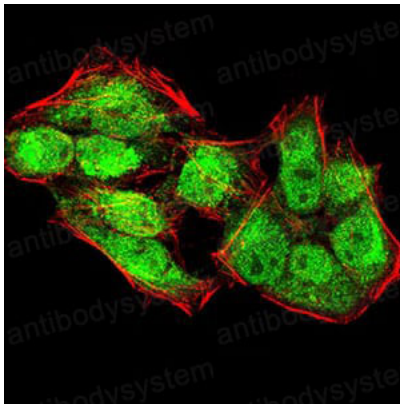
For research use only.

Data Image



Immunofluorescence

Immunofluorescence analysis of HeLa cells using KDM4A mouse mAb. Blue: DRAQ5 fluorescent DNA dye. Red: Actin filaments have been labeled with Alexa Fluor- 555 phalloidin.



Immunofluorescence

Immunofluorescence analysis of HeLa cells using KDM4A mouse mAb (green). Blue: DRAQ5 fluorescent DNA dye. Red: Actin filaments have been labeled with Alexa Fluor- 555 phalloidin.