

Anti-KDM4A Antibody (R2V57)

Summary

Catalog No.	RHB11507
Clone ID	R2V57
Host species	Mouse
Tested applications	IF: 1:200-1:1000, IHC: 1:200-1:1000
Species reactivity	Human
Form	Liquid
Storage buffer	0.01M PBS, pH 7.4, 0.05% Sodium Azide.
Concentration	1 mg/ml
Purity	>95% as determined by SDS-PAGE.
Clonality	Monoclonal
Isotype	IgG1
Applications	IF, IHC
Target	Lysine-specific demethylase 4A, JMJD2, Jumonji domain-containing protein 2A, KDM4A, KIAA0677, JHDM3A, [histone H3]-trimethyl-L-lysine(9) demethylase 4A, [histone H3]-trimethyl-L-lysine(36) demethylase 4A, JMJD2A, JmjC domain-containing histone demethylation protein 3A
Purification	Protein A/G purified from cell culture supernatant.
Endotoxin level	Please contact with the lab for this information.
Accession	O75164

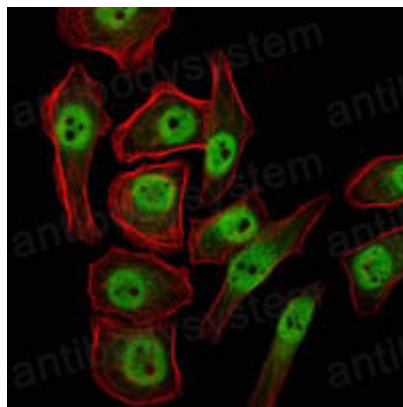
Stability and Storage

Use a manual defrost freezer and avoid repeated freeze-thaw cycles.

Store at 4°C short term (1-2 weeks). Store at -20°C 12 months. Store at -80°C long term.

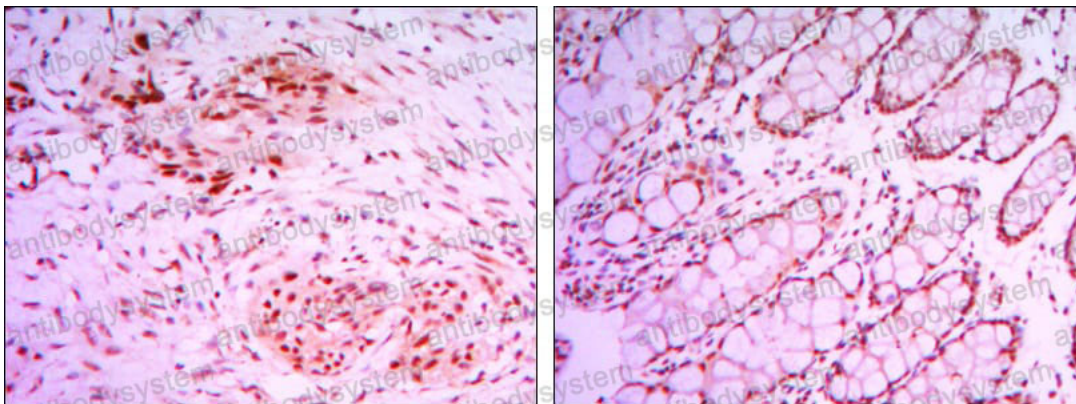
Note

For research use only.

Data Image

Immunofluorescence

Immunofluorescence analysis of NTERA-2 cells using KDM4A mouse mAb (green). Red: Actin filaments have been labeled with Alexa Fluor-555 phalloidin.



Immunohistochemical

Immunohistochemical analysis of paraffin-embedded human colon cancer tissues (left) and human larynx cancer tissues (right) using KDM4A mouse mAb with DAB staining.