

Anti-phospho-MITF (pS157) Antibody (R2V50)

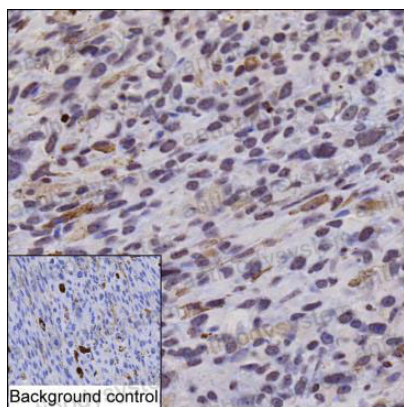
Summary

Catalog No.	RRB06201
Clone ID	R2V50
Host species	Mouse
Tested applications	IHC: 1:50-1:200
Species reactivity	Rat
Form	Liquid
Storage buffer	0.01M PBS, pH 7.4, 0.05% Sodium Azide.
Concentration	1 mg/ml
Purity	>95% as determined by SDS-PAGE.
Clonality	Monoclonal
Isotype	IgG2b
Applications	IHC
Target	MITF, BHLHE32, bHLHe32, Microphthalmia-associated transcription factor, Class E basic helix-loop-helix protein 32
Purification	Protein A/G purified from cell culture supernatant.
Endotoxin level	Please contact with the lab for this information.
Accession	O88368
Stability and Storage	Use a manual defrost freezer and avoid repeated freeze-thaw cycles. Store at 4°C short term (1-2 weeks). Store at -20°C 12 months. Store at -80°C long term.

Note

For research use only.

Data Image



Immunohistochemical

IHC-P analysis of cutaneous melanoma tissue by Mitf antibody (RRB06201). IHC-P was performed using sections of the formalin-fixed paraffin-embedded cutaneous melanoma tissue; Result: Tumor cells are positively stained at the nuclei.