

# Anti-PLIN3 Antibody (R2V33)

## Summary

---

<b>Catalog No.</b>	RHA96801
<b>Clone ID</b>	R2V33
<b>Host species</b>	Mouse
<b>Tested applications</b>	FCM: 1:200-1:400, IF: 1:100-1:500, WB: 1:500-1:2000
<b>Species reactivity</b>	Human
<b>Form</b>	Liquid
<b>Storage buffer</b>	0.01M PBS, pH 7.4, 0.05% Sodium Azide.
<b>Concentration</b>	1 mg/ml
<b>Purity</b>	>95% as determined by SDS-PAGE.
<b>Clonality</b>	Monoclonal
<b>Isotype</b>	IgG2a
<b>Applications</b>	FCM, IF, WB
<b>Target</b>	47 kDa mannose 6-phosphate receptor-binding protein, M6PRBP1, 47 kDa MPR-binding protein, PLIN3, Mannose-6-phosphate receptor-binding protein 1, Cargo selection protein TIP47, Perilipin-3, PP17, TIP47, Placental protein 17
<b>Purification</b>	Protein A/G purified from cell culture supernatant.
<b>Endotoxin level</b>	Please contact with the lab for this information.
<b>Accession</b>	O60664

**Stability and Storage**

Use a manual defrost freezer and avoid repeated freeze-thaw cycles.

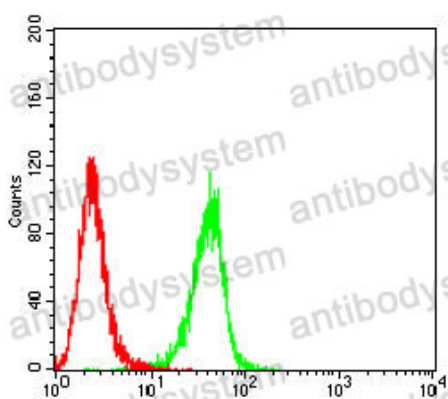
Store at 4°C short term (1-2 weeks). Store at -20°C 12 months. Store at -80°C long term.

**Note**

For research use only.

## Data Image

---



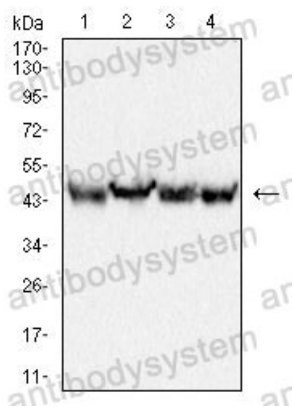
Flow Cytometry

Flow cytometric analysis of Hela cells using PLIN3 mouse mAb (green) and negative control (red).



Immunofluorescence

Immunofluorescence analysis of Hela cells using PLIN3 mouse mAb (green). Blue: DRAQ5 fluorescent DNA dye. Red: Actin filaments have been labeled with Alexa Fluor- 555 phalloidin.



Western blot

Western blot analysis using PLIN3 mouse mAb against THP-1 (1), HepG2 (2), K562 (3) and HeLa (4) cell lysate.