

Anti-CD282/TLR2 Antibody (R2V31)

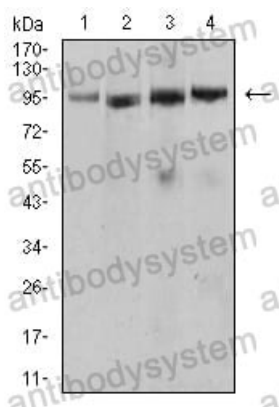
Summary

Catalog No.	RMA95503
Clone ID	R2V31
Host species	Mouse
Tested applications	ELISA: 1:10000, WB: 1:500-1:2000
Species reactivity	Human, Mouse
Form	Liquid
Storage buffer	0.01M PBS, pH 7.4, 0.05% Sodium Azide.
Concentration	1 mg/ml
Purity	>95% as determined by SDS-PAGE.
Clonality	Monoclonal
Isotype	IgG1
Applications	ELISA, WB
Target	TIL4, Toll-like receptor 2, TLR2, Toll/interleukin-1 receptor-like protein 4, CD282
Purification	Protein A/G purified from cell culture supernatant.
Endotoxin level	Please contact with the lab for this information.
Accession	O60603, Q9QUN7
Stability and Storage	Use a manual defrost freezer and avoid repeated freeze-thaw cycles. Store at 4°C short term (1-2 weeks). Store at -20°C 12 months. Store at -80°C long term.

Note

For research use only.

Data Image



Western blot

Western blot analysis using Tlr2 mouse mAb against Ramos (1), U937 (2), Jurkat (3), and Hela (4) cell lysate.