

# Anti-KDM1A Antibody (R2V19)

## Summary

---

<b>Catalog No.</b>	RHA88903
<b>Clone ID</b>	R2V19
<b>Host species</b>	Mouse
<b>Tested applications</b>	ELISA: 1:10000, FCM: 1:200-1:400, IF: 1:200-1:1000, WB: 1:500-1:2000
<b>Species reactivity</b>	Human
<b>Form</b>	Liquid
<b>Storage buffer</b>	0.01M PBS, pH 7.4, 0.05% Sodium Azide.
<b>Concentration</b>	1 mg/ml
<b>Purity</b>	>95% as determined by SDS-PAGE.
<b>Clonality</b>	Monoclonal
<b>Isotype</b>	IgG1
<b>Applications</b>	ELISA, FCM, IF, WB
<b>Target</b>	Lysine-specific histone demethylase 1A, KDM1, [histone H3]-dimethyl-L-lysine(4) FAD-dependent demethylase 1A, Flavin-containing amine oxidase domain-containing protein 2, KIAA0601, BRAF35-HDAC complex protein BHC110, KDM1A, AOF2, LSD1
<b>Purification</b>	Protein A/G purified from cell culture supernatant.
<b>Endotoxin level</b>	Please contact with the lab for this information.
<b>Accession</b>	O60341

**Stability and Storage**

Use a manual defrost freezer and avoid repeated freeze-thaw cycles.

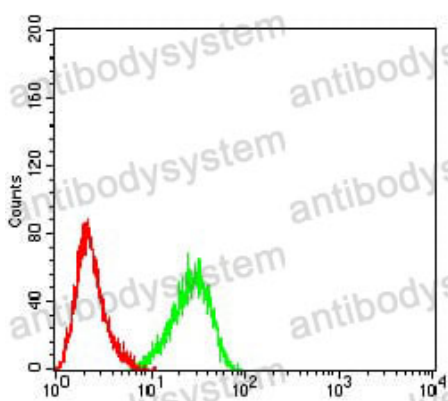
Store at 4°C short term (1-2 weeks). Store at -20°C 12 months. Store at -80°C long term.

**Note**

For research use only.

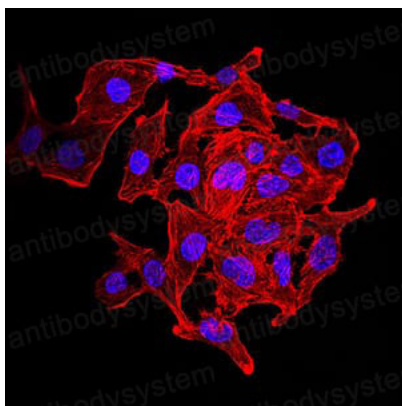
**Data Image**

---



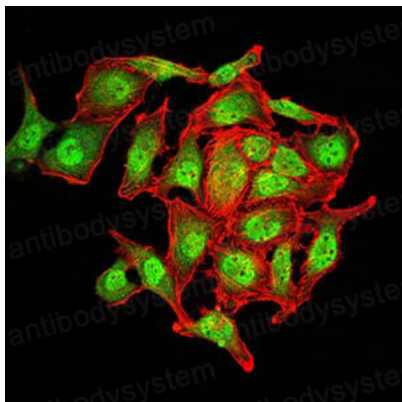
Flow Cytometry

Flow cytometric analysis of Hela cells using KDM1A mouse mAb (green) and negative control (red).

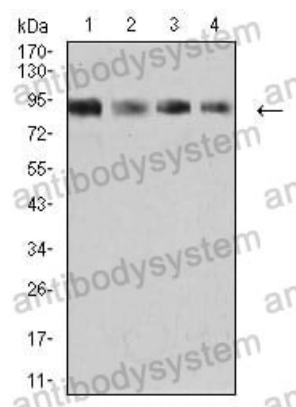


Immunofluorescence

Immunofluorescence analysis of SK-OV-3 cells using KDM1A mouse mAb. Blue: DRAQ5 fluorescent DNA dye. Red: Actin filaments have been labeled with Alexa Fluor- 555 phalloidin.



Immunofluorescence



Western blot

Immunofluorescence analysis of SK-OV-3 cells using KDM1A mouse mAb (green). Blue: DRAQ5 fluorescent DNA dye. Red: Actin filaments have been labeled with Alexa Fluor- 555 phalloidin.

Western blot analysis using KDM1A mouse mAb against K562 (1), SW480 (2), Jurkat (3), and Hela (4) cell lysate.