

# Anti-RAD21 Antibody (R2V13)

## Summary

---

<b>Catalog No.</b>	RHA83002
<b>Clone ID</b>	R2V13
<b>Host species</b>	Mouse
<b>Tested applications</b>	ELISA: 1:10000, FCM: 1:200-1:400, IF: 1:200-1:1000, IHC: 1:200-1:1000, WB: 1:500-1:2000
<b>Species reactivity</b>	Human, Rat, Monkey
<b>Form</b>	Liquid
<b>Storage buffer</b>	0.01M PBS, pH 7.4, 0.05% Sodium Azide.
<b>Concentration</b>	1 mg/ml
<b>Purity</b>	>95% as determined by SDS-PAGE.
<b>Clonality</b>	Monoclonal
<b>Isotype</b>	IgG1
<b>Applications</b>	ELISA, FCM, IF, IHC, WB
<b>Target</b>	SCC1, RAD21, KIAA0078, Nuclear matrix protein 1, Double-strand-break repair protein rad21 homolog, NXP1, SCC1 homolog, 64-kDa carboxy-terminal product, 65-kDa carboxy-terminal product, hHR21, HR21, NXP-1
<b>Purification</b>	Protein A/G purified from cell culture supernatant.
<b>Endotoxin level</b>	Please contact with the lab for this information.
<b>Accession</b>	O60216

**Stability and Storage**

Use a manual defrost freezer and avoid repeated freeze-thaw cycles.

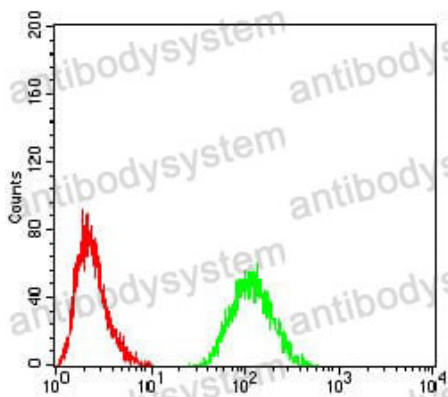
Store at 4°C short term (1-2 weeks). Store at -20°C 12 months. Store at -80°C long term.

**Note**

For research use only.

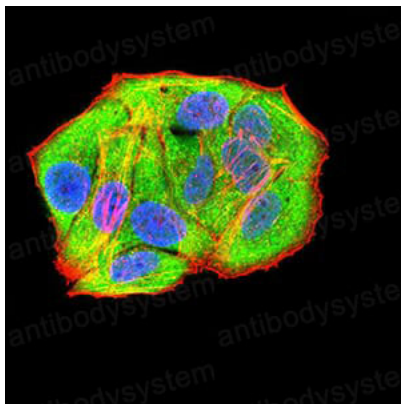
**Data Image**

---



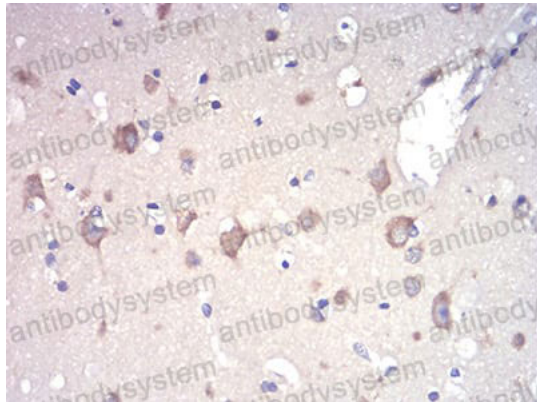
Flow Cytometry

Flow cytometric analysis of Hela cells using RAD21 mouse mAb (green) and negative control (red).



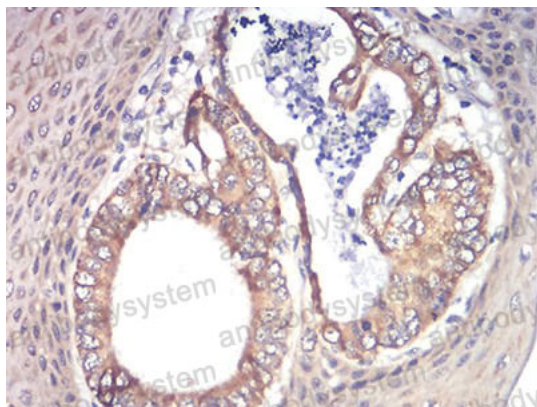
Immunofluorescence

Immunofluorescence analysis of Hela cells using RAD21 mouse mAb (green). Blue: DRAQ5 fluorescent DNA dye. Red: Actin filaments have been labeled with Alexa Fluor- 555 phalloidin.



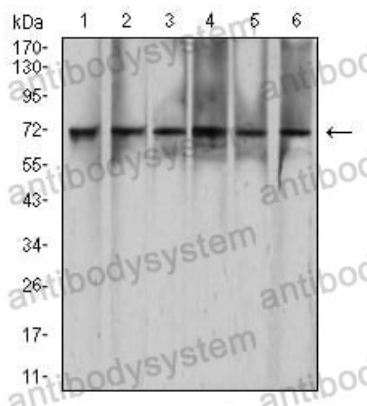
Immunohistochemical

Immunohistochemical analysis of paraffin-embedded human brain tissues using RAD21 mouse mAb with DAB staining.



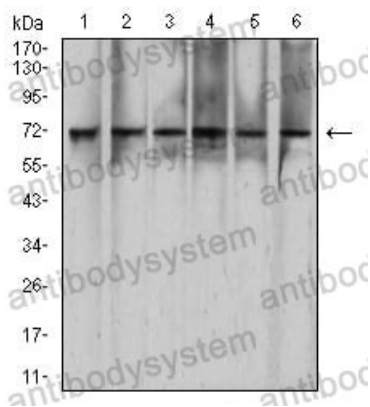
Immunohistochemical

Immunohistochemical analysis of paraffin-embedded human esophageal cancer tissues using RAD21 mouse mAb with DAB staining.



Western blot

Western blot analysis using RAD21 mouse mAb against Hela (1), HEK293 (2), K562 (3), C6 (4), \*\*\* (5), and COS7 (6) cell lysate.



Western blot

Western blot analysis using RAD21 mouse mAb against HeLa (1), HEK293 (2), K562 (3), C6 (4), \*\*\* (5), and COS7 (6) cell lysate.