

# Anti-DCX Antibody (R2U96)

## Summary

---

<b>Catalog No.</b>	RHA72203
<b>Clone ID</b>	R2U96
<b>Host species</b>	Mouse
<b>Tested applications</b>	ELISA: 1:10000, FCM: 1:200-1:400, IF: 1:200-1:1000, IHC: 1:200-1:1000, WB: 1:500-1:2000
<b>Species reactivity</b>	Human, Mouse, Rat, Rabbit, Monkey
<b>Form</b>	Liquid
<b>Storage buffer</b>	0.01M PBS, pH 7.4, 0.05% Sodium Azide.
<b>Concentration</b>	1 mg/ml
<b>Purity</b>	>95% as determined by SDS-PAGE.
<b>Clonality</b>	Monoclonal
<b>Isotype</b>	IgG1
<b>Applications</b>	ELISA, FCM, IF, IHC, WB
<b>Target</b>	Lis-X, LISX, DCX, Neuronal migration protein doublecortin, Doublin, Lissencephalin-X, DBCN
<b>Purification</b>	Protein A/G purified from cell culture supernatant.
<b>Endotoxin level</b>	Please contact with the lab for this information.
<b>Accession</b>	O43602

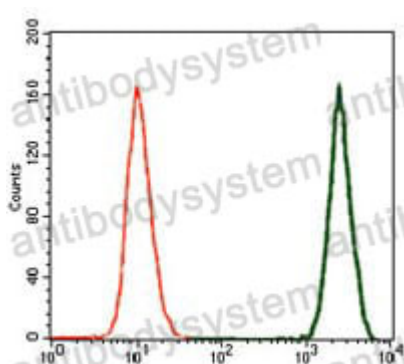
**Stability and Storage**

Use a manual defrost freezer and avoid repeated freeze-thaw cycles.

Store at 4°C short term (1-2 weeks). Store at -20°C 12 months. Store at -80°C long term.

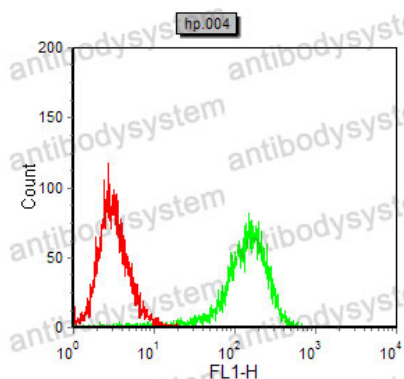
**Note**

For research use only.

**Data Image**

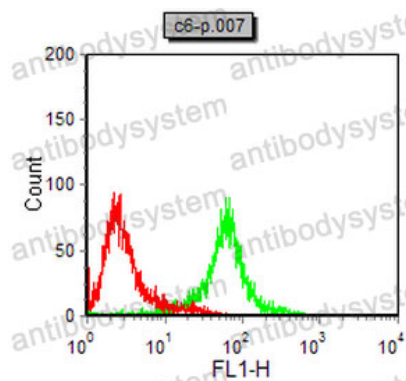
Flow Cytometry

Flow cytometric analysis of SK-N-SH cells using DCX mouse mAb (green) and negative control (red).



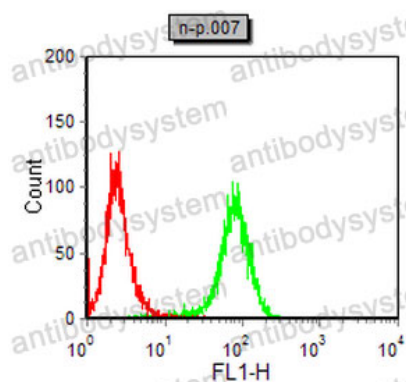
Flow Cytometry

Flow cytometric analysis of Hela cells using DCX mouse mAb (green) and negative control (red).



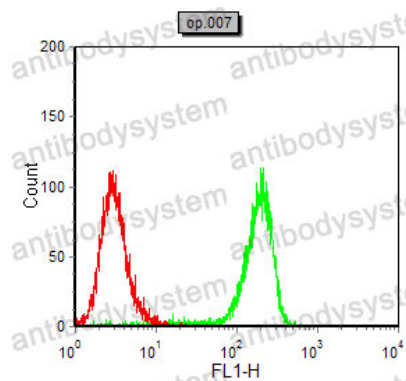
Flow Cytometry

Flow cytometric analysis of C6 cells using DCX mouse mAb (green) and negative control (red).



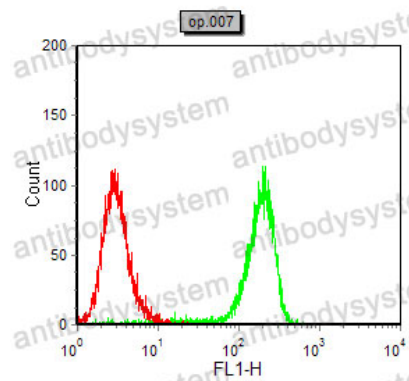
Flow Cytometry

Flow cytometric analysis of NIH/3T3 cells using DCX mouse mAb (green) and negative control (red).



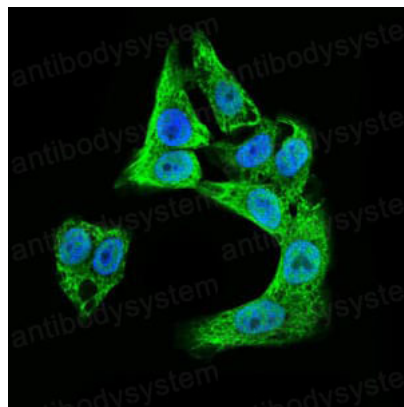
Flow Cytometry

Flow cytometric analysis of COS7 cells using DCX mouse mAb (green) and negative control (red).



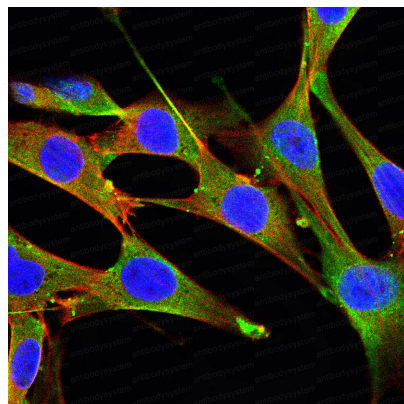
Flow Cytometry

Flow cytometric analysis of COS7 cells using DCX mouse mAb (green) and negative control (red).



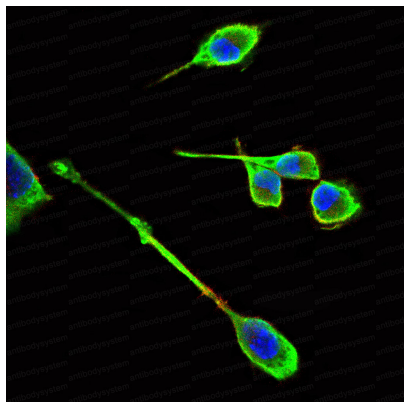
Immunofluorescence

Immunofluorescence analysis of HepG2 cells using DCX mouse mAb (green). Blue: DRAQ5 fluorescent DNA dye.



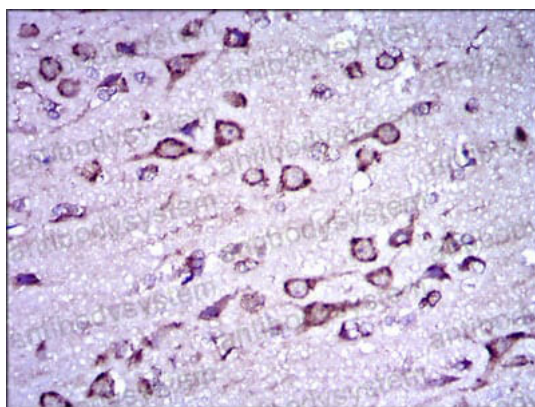
Immunofluorescence

Immunofluorescence analysis of NIH/3T3 cells using DCX mouse mAb (green). Blue: DRAQ5 fluorescent DNA dye. Red: Actin filaments have been labeled with Alexa Fluor-555 phalloidin.



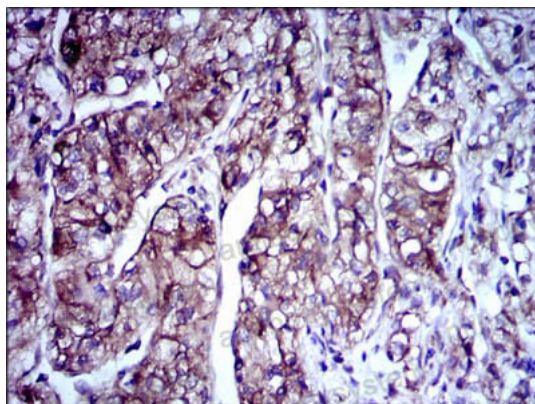
Immunofluorescence

Immunofluorescence analysis of RSC-96 cells using DCX mouse mAb (green). Blue: DRAQ5 fluorescent DNA dye. Red: Actin filaments have been labeled with Alexa Fluor- 555 phalloidin.



Immunohistochemical

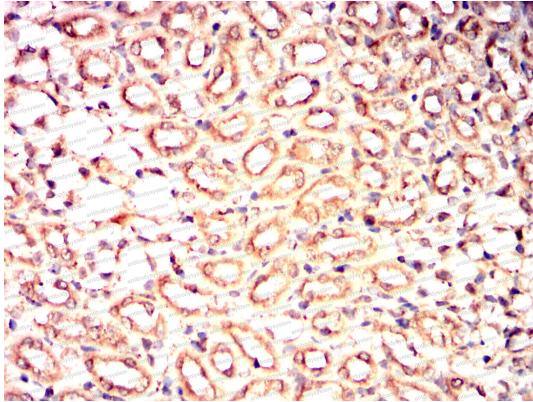
Immunohistochemical analysis of paraffin-embedded human brain tissue tissues using DCX mouse mAb with DAB staining.



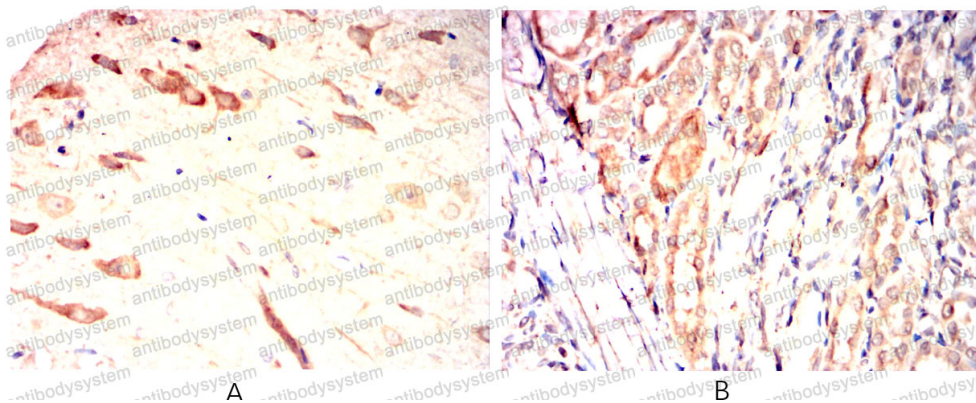
Immunohistochemical

Immunohistochemical analysis of paraffin-embedded human kidney cancer tissues using DCX mouse mAb with DAB staining.

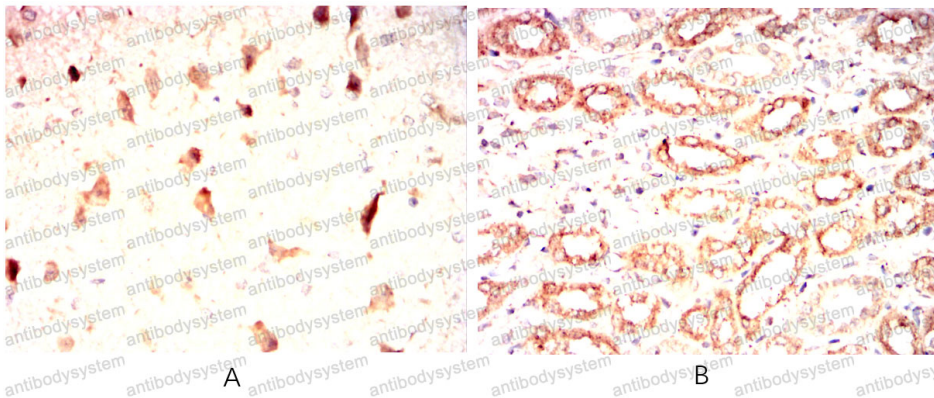


**Immunohistochemical**

Immunohistochemical analysis of paraffin-embedded Mouse kidney using DCX mouse mAb with DAB staining.

**Immunohistochemical**

Immunohistochemical analysis of paraffin-embedded Rat brain(A)Rat kidney(B) using DCX mouse mAb with DAB staining.

**Immunohistochemical**

Immunohistochemical analysis of paraffin-embedded Rabbit brain(A)Rabbit kidney(B) using DCX mouse mAb with DAB staining.