

Anti-SMAD6 Antibody (R2U92)

Summary

Catalog No.	RHA70201
Clone ID	R2U92
Host species	Mouse
Tested applications	WB: 1:500-1:2000
Species reactivity	Human
Form	Liquid
Storage buffer	0.01M PBS, pH 7.4, 0.05% Sodium Azide.
Concentration	1 mg/ml
Purity	>95% as determined by SDS-PAGE.
Clonality	Monoclonal
Isotype	IgG1
Applications	WB
Target	hSMAD6, MAD homolog 6, SMAD family member 6, SMAD 6, Mothers against decapentaplegic homolog 6, SMAD6, Mothers against DPP homolog 6, MADH6, Smad6
Purification	Protein A/G purified from cell culture supernatant.
Endotoxin level	Please contact with the lab for this information.
Accession	O43541

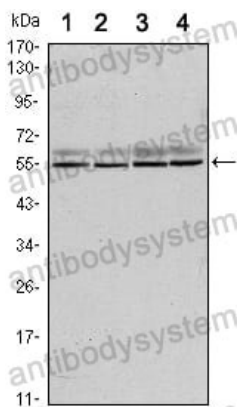
Stability and Storage

Use a manual defrost freezer and avoid repeated freeze-thaw cycles.

Store at 4°C short term (1-2 weeks). Store at -20°C 12 months. Store at -80°C long term.

Note

For research use only.

Data Image

Western blot

Western blot analysis using SMAD6 mouse mAb against A431 (1), A431 (2), Hela (3) and Jurkat (4) cell lysate.