

Anti-KLF4 Antibody (R2U88)

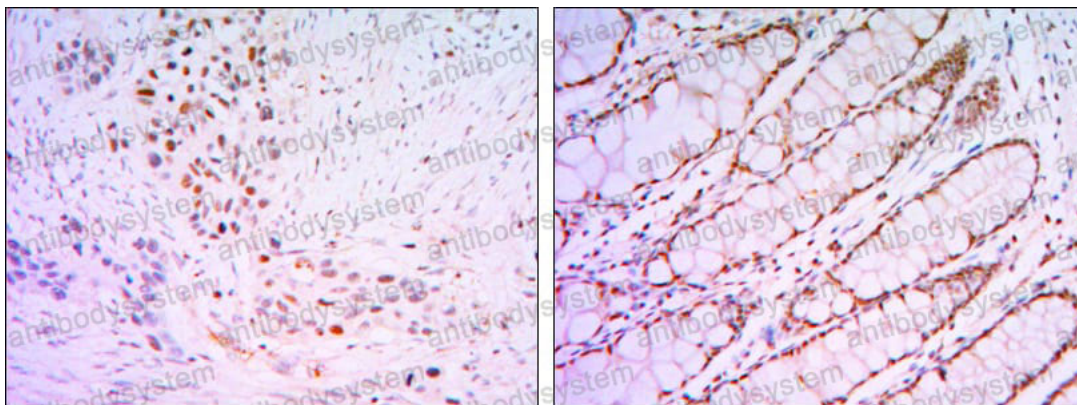
Summary

Catalog No.	RHA68101
Clone ID	R2U88
Host species	Mouse
Tested applications	IHC: 1:200-1:1000
Species reactivity	Human
Form	Liquid
Storage buffer	0.01M PBS, pH 7.4, 0.05% Sodium Azide.
Concentration	1 mg/ml
Purity	>95% as determined by SDS-PAGE.
Clonality	Monoclonal
Isotype	IgG1
Applications	IHC
Target	KLF4, Gut-enriched krueppel-like factor, Krueppel-like factor 4, EZF, GKLF, Epithelial zinc finger protein EZF
Purification	Protein A/G purified from cell culture supernatant.
Endotoxin level	Please contact with the lab for this information.
Accession	O43474
Stability and Storage	Use a manual defrost freezer and avoid repeated freeze-thaw cycles. Store at 4°C short term (1-2 weeks). Store at -20°C 12 months. Store at -80°C long term.

Note

For research use only.

Data Image



Immunohistochemical analysis of paraffin-embedded human lung cancer tissues (left) and human rectum tissues (right) using KLF4 mouse mAb with DAB staining.

Immunohistochemical