

Anti-HTRA2 Antibody (R2U87)

Summary

Catalog No.	RHA68004
Clone ID	R2U87
Host species	Mouse
Tested applications	IP: 1:20, WB: 1:500-1:1000
Species reactivity	Human
Form	Liquid
Storage buffer	0.01M PBS, pH 7.4, 0.5% BSA, 0.05% Sodium Azide and 50% Glycerol.
Concentration	1 mg/ml
Purity	>95% as determined by SDS-PAGE.
Clonality	Monoclonal
Isotype	IgG1
Applications	IP, WB
Target	High temperature requirement protein A2, OMI, HtrA2, PRSS25, Serine protease 25, Serine proteinase OMI, Serine protease HTRA2, mitochondrial, HTRA2, Omi stress-regulated endoprotease
Purification	Protein A/G purified from cell culture supernatant.
Endotoxin level	Please contact with the lab for this information.
Accession	O43464

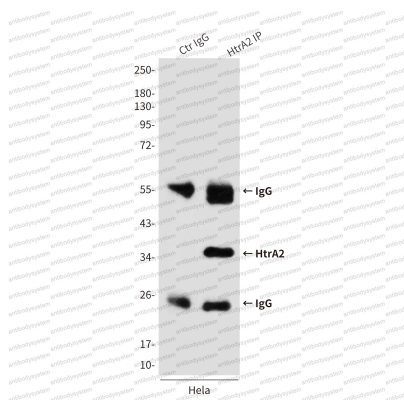
Stability and Storage

Use a manual defrost freezer and avoid repeated freeze-thaw cycles.

Store at 4°C short term (1-2 weeks). Store at -20°C 12 months. Store at -80°C long term.

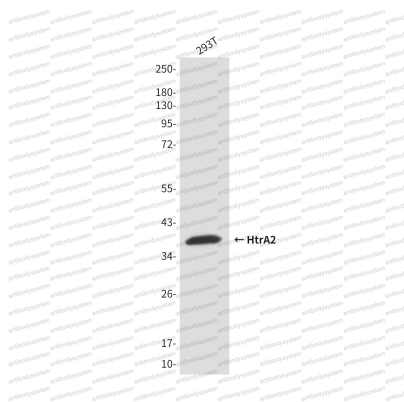
Note

For research use only.

Data Image

Immunoprecipitation

Immunoprecipitation analysis of HtrA2 in HeLa lysates using HtrA2/Omi antibody.



Western blot

Western blot analysis of HtrA2/Omi in 293T lysates using HtrA2/Omi antibody.