

Anti-HTRA2 Antibody (R2U86)

Summary

Catalog No.	RHA68005
Clone ID	R2U86
Host species	Mouse
Tested applications	ELISA: 1:10000, FCM: 1:200-1:400, IHC: 1:200-1:1000, WB: 1:500-1:2000
Species reactivity	Human, Mouse, Rat
Form	Liquid
Storage buffer	0.01M PBS, pH 7.4, 0.05% Sodium Azide.
Concentration	1 mg/ml
Purity	>95% as determined by SDS-PAGE.
Clonality	Monoclonal
Isotype	IgG1
Applications	ELISA, FCM, IHC, WB
Target	High temperature requirement protein A2, OMI, Htra2, PRSS25, Serine protease 25, Serine proteinase OMI, Serine protease HTRA2, mitochondrial, HTRA2, Omi stress-regulated endoprotease
Purification	Protein A/G purified from cell culture supernatant.
Endotoxin level	Please contact with the lab for this information.
Accession	O43464

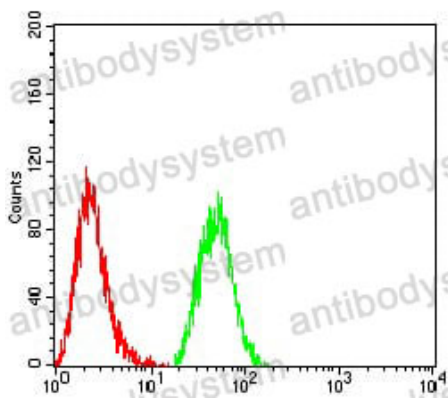
Stability and Storage

Use a manual defrost freezer and avoid repeated freeze-thaw cycles.
Store at 4°C short term (1-2 weeks). Store at -20°C 12 months. Store at -80°C long term.

Note

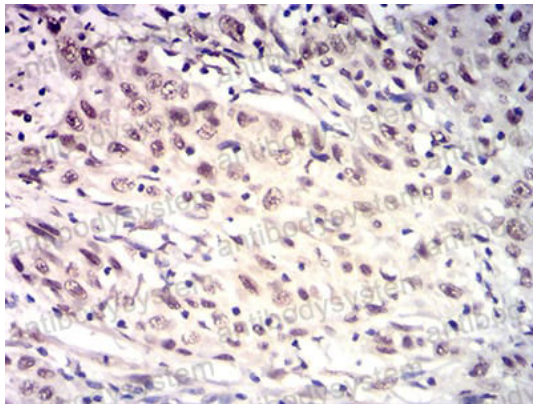
For research use only.

Data Image



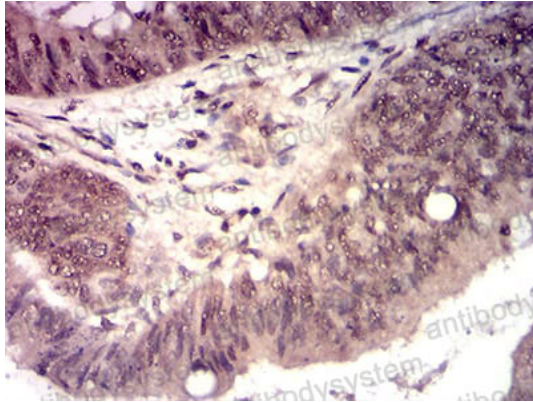
Flow Cytometry

Flow cytometric analysis of HeLa cells using HTRA2 mouse mAb (green) and negative control (red).



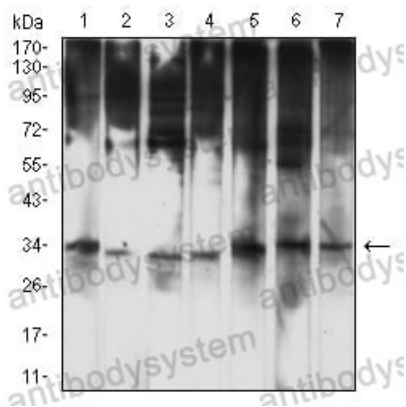
Immunohistochemical

Immunohistochemical analysis of paraffin-embedded human esophageal cancer tissues using HTRA2 mouse mAb with DAB staining.



Immunohistochemical analysis of paraffin-embedded human esophageal cancer tissues using HTRA2 mouse mAb with DAB staining.

Immunohistochemical



Western blot analysis using HTRA2 mouse mAb against HL-60 (1), HepG2 (2), MCF-7 (3), HeLa (4), PC-12 (5), C2C12 (6), and Raji (7) cell lysate.

Western blot